



602 PARK POINT DRIVE Golden, Colorado 80401

PROPERTY FEATURES

- Excellent access to I-70
- Close to retail and restaurants
- Common conference room and showers
- Responsive property management
- Abundant parking



BUILDING SPECIFICATIONS

Available:	Suite 233	<i>Available Now</i>	582 RSF
	Suite 110	<i>Available 12/01/2024</i>	832 RSF
	Suite 250	<i>Available 11/01/2024</i>	1,772 RSF
	Suite 105	<i>Available 01/01/2025</i>	2,134 RSF

Lease Rate: \$18.50/RSF FSG

Stories: 2

Building Size: 36,402 SF

No warranty or representation is made as to the accuracy of the foregoing information. Terms of sale or lease and availability are subject to change or withdrawal without notice.

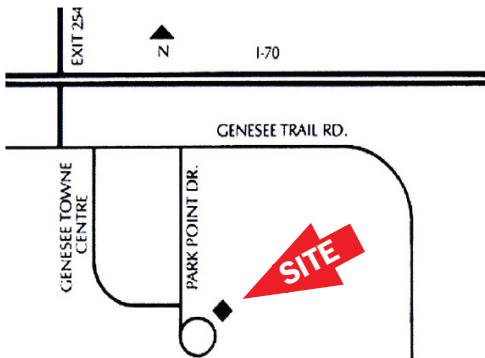
FOR MORE INFORMATION CONTACT:

JAMIE MACBETH

jmacbeth@gcgcre.com | 720.476.5229

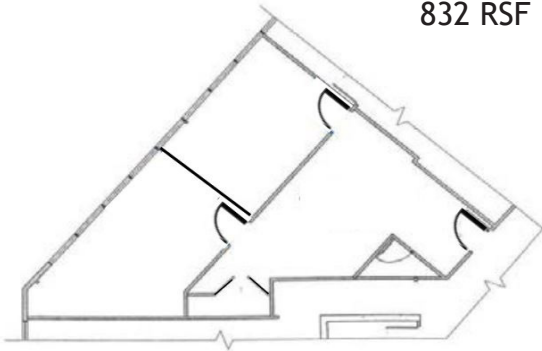
RENÉE SPICER

rspicer@gcgcre.com | 720.476.5226

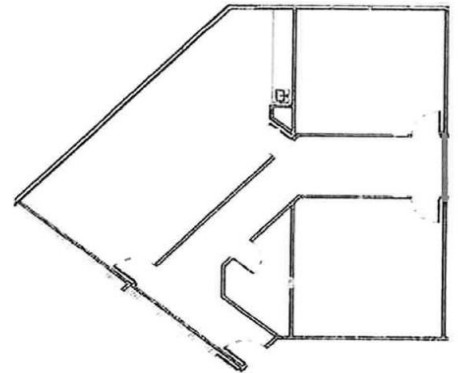




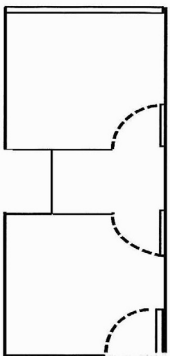
Suite 110
832 RSF



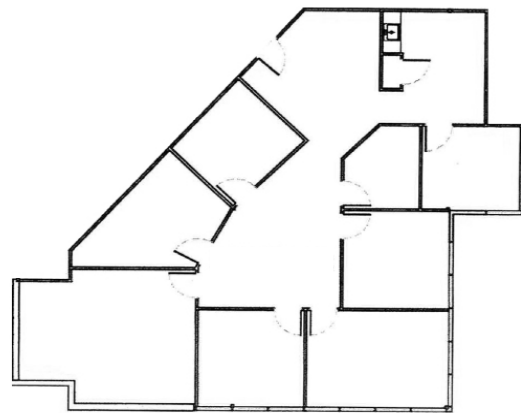
Suite 250
1,772 RSF



Suite 233
582 RSF



Suite 105
2,134 RSF



FOR MORE INFORMATION CONTACT:

JAMIE MACBETH

jmacbeth@gcgcre.com | 720.476.5229

RENÉE SPICER

rspicer@gcgcre.com | 720.476.5226