

602 PARK POINT DRIVE Golden, Colorado 80401

PROPERTY FEATURES

- Excellent access to I-70
- Close to retail and restaurants
- Common conference room & showers
- Responsive property management
- Ample parking



BUILDING SPECIFICATIONS

Available:	Suite 235	603 RSF
	Suite 110	832 RSF
	Suite 200	1,439 RSF
	Suite 215	2,077 RSF
	Suite 105	2,134 RSF

Lease Rate: \$18.50/RSF FSG

Stories: 3

Building Size: 36,402 SF

No warranty or representation is made as to the accuracy of the foregoing information. Terms of sale or lease and availability are subject to change or withdrawal without notice.

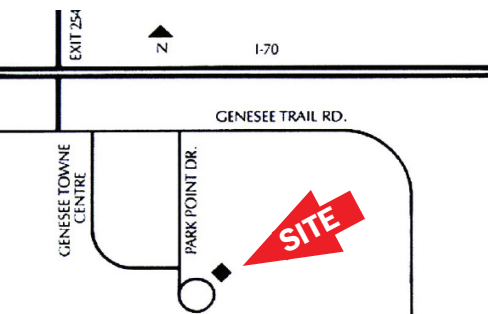
FOR MORE INFORMATION CONTACT:

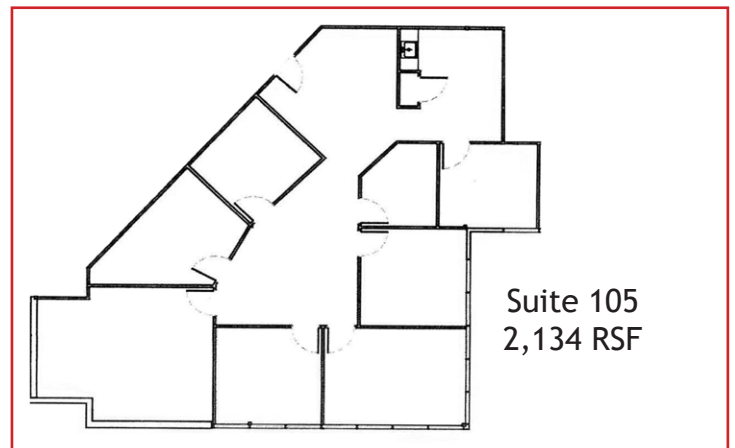
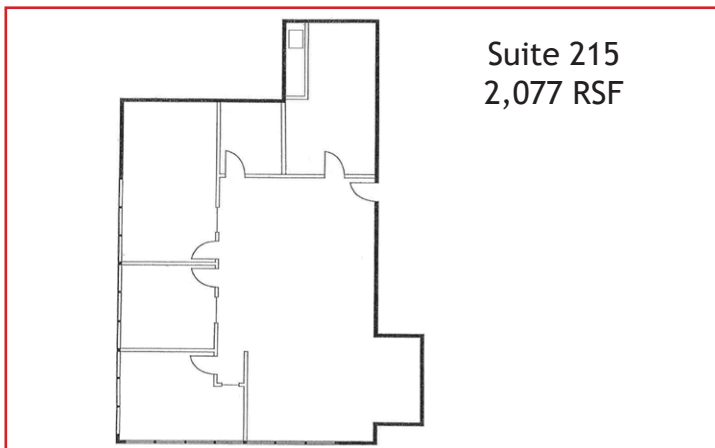
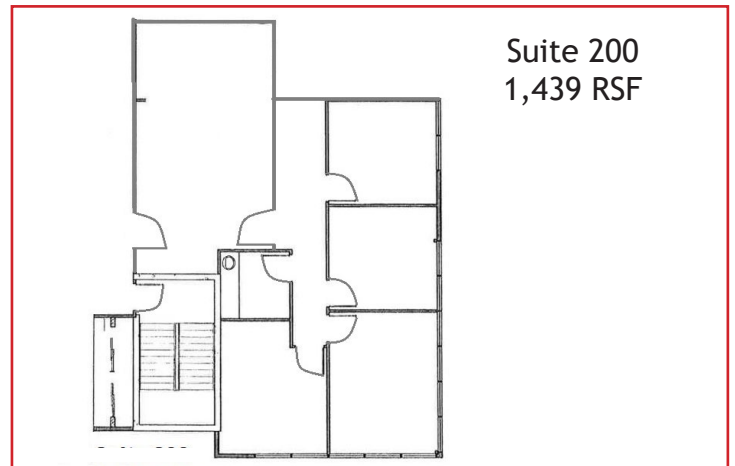
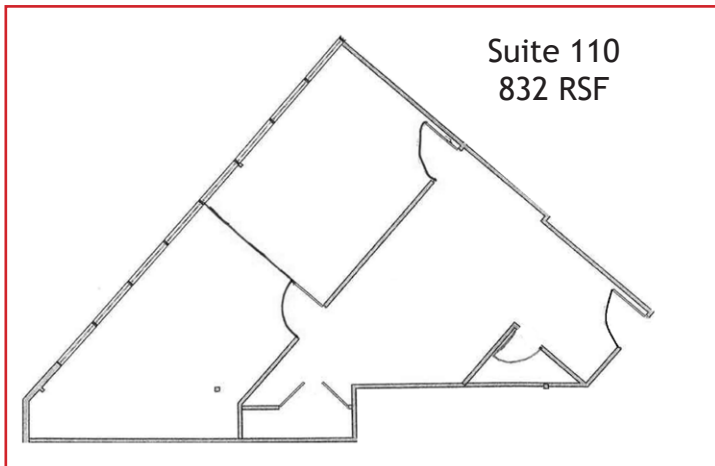
JAMIE MACBETH

jmacbeth@gcgcre.com | 720.476.5229

RENÉE SPICER

rspicer@gcgcre.com | 720.476.5226





FOR MORE INFORMATION CONTACT:

JAMIE MACBETH
jmacbeth@gcgcre.com | 720.476.5229

RENÉE SPICER
rspicer@gcgcre.com | 720.476.5226