



**12211 WEST ALAMEDA PARKWAY**

Lakewood, Colorado 80228



**PROPERTY FEATURES**

- **Broker incentives available**
- Great Lakewood location near West 6th Ave, Union Blvd., St. Anthony's Medical Center, Light Rail Station
- Recently renovated interior and exterior common areas
- Recently resurfaced parking lot
- Aggressive full service leasing rate
- On-Site property management in adjacent building
- Comcast available to the building
- Monument signage available

**PROPERTY SPECIFICATIONS**

<b>Available:</b>	Suite 101	762 RSF
	Suite 205	2,537 RSF
	Suite 202	1,663 RSF
	Suite 210	894 RSF
		<i>Available 12/2021</i>
<b>Lease Rate:</b>		\$17.00/SF FSG
<b>Year Renovated:</b>		2011
<b>Elevator:</b>		No
<b>Parking:</b>		5/1,000 SF
<b>Building Area:</b>		19,223 SF

**FOR MORE INFORMATION CONTACT:**

**JAMIE MACBETH**

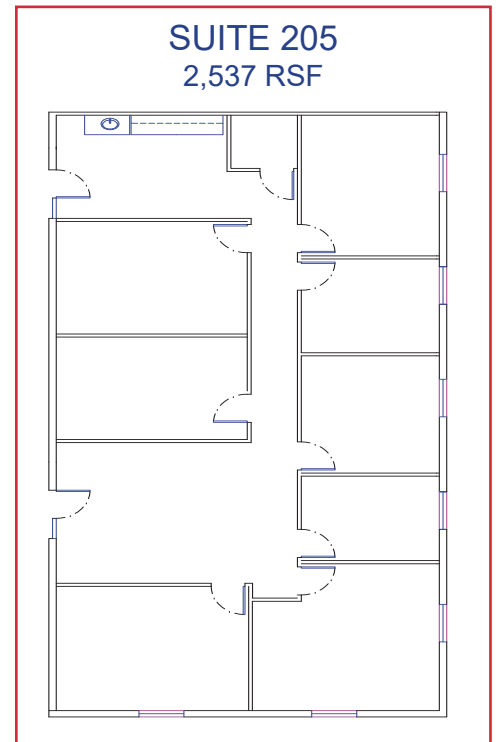
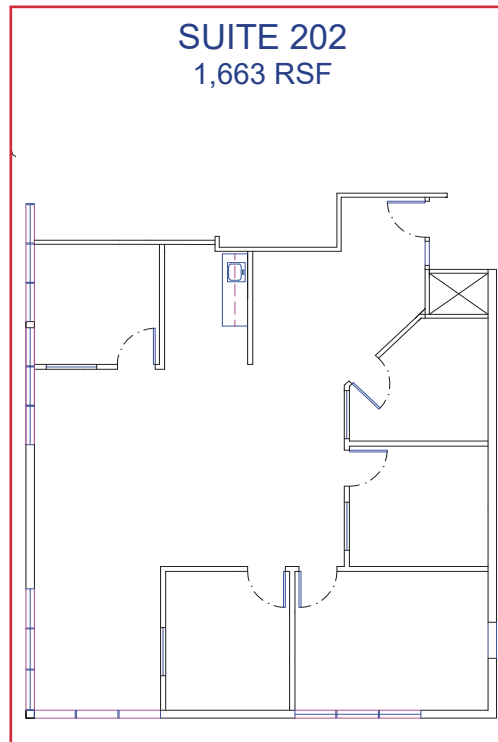
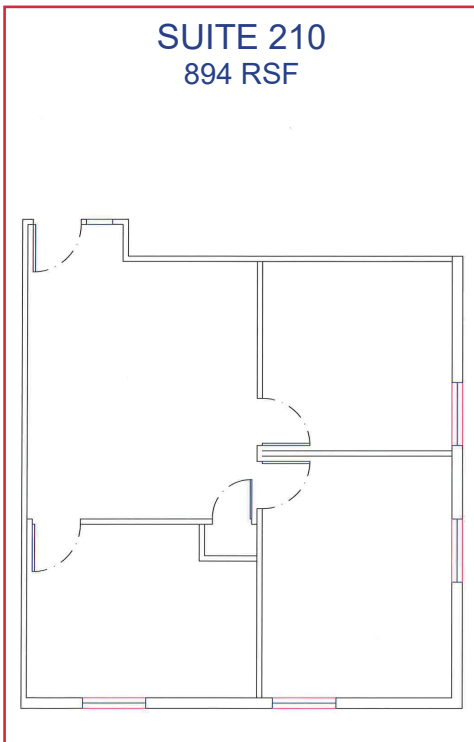
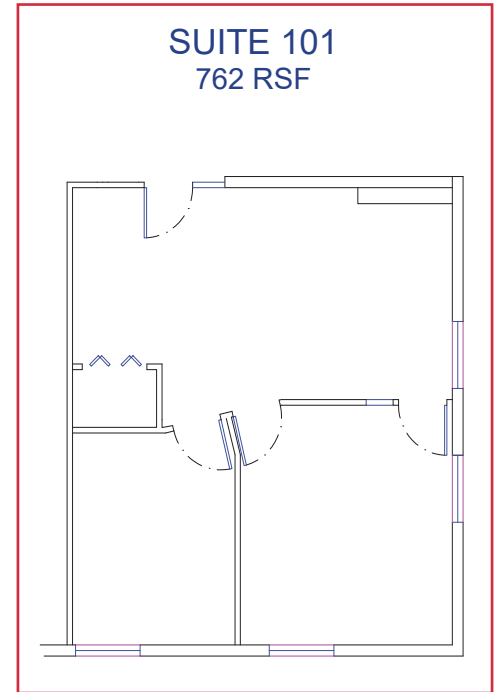
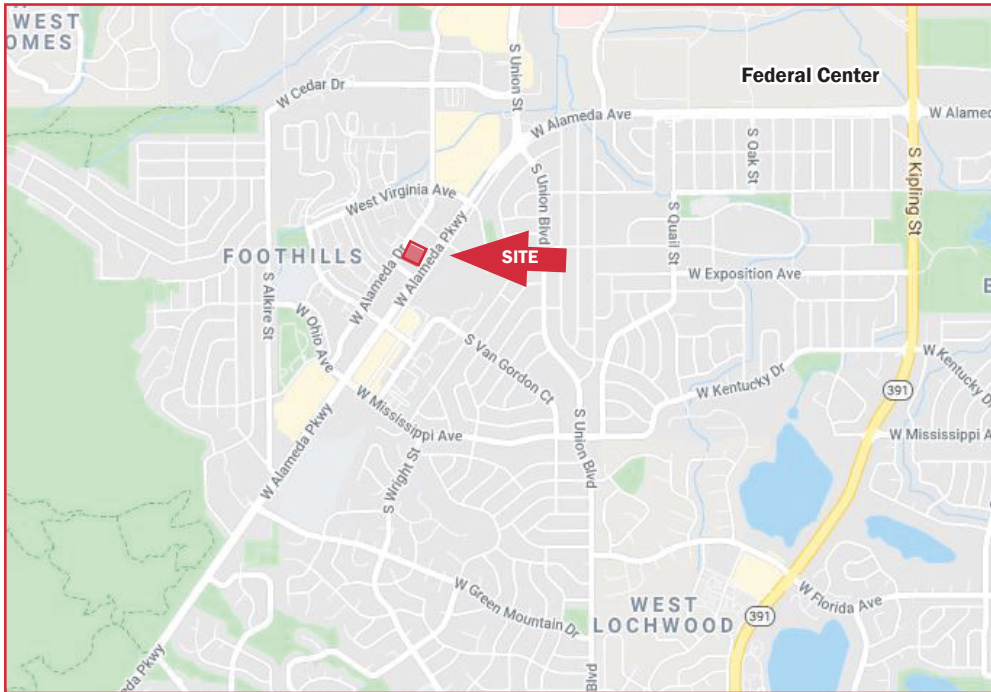
jmacbeth@gcgcre.com | 720.476.5229

**TIM P. ROGERS**

tprogers@gcgcre.com | 720.476.5225

**T. BLAKE ROGERS**

tblakerogers@gcgcre.com | 720.530.5788



**FOR MORE INFORMATION CONTACT:**

**JAMIE MACBETH**

jmacbeth@gcgcre.com | 720.476.5229

**TIM P. ROGERS**

tprogers@gcgcre.com | 720.476.5225

**T. BLAKE ROGERS**

tblakerogers@gcgcre.com | 720.530.5788