



12211 WEST ALAMEDA PARKWAY Lakewood, Colorado 80228



PROPERTY FEATURES

- Great Lakewood location near West 6th Ave, Union Blvd., St. Anthony's Medical Center, Light Rail Station
- Recently renovated interior and exterior common areas
- Recently resurfaced parking lot
- Aggressive full service leasing rate
- On-Site property management in adjacent building
- Comcast available to the building
- Monument signage available

BUILDING SPECIFICATIONS

Availability:	Suite 101	756 RSF
	Suite 201	1,344 RSF
	Suite 205	2,537 RSF
<i>AVAILABLE NOW</i>		
Lease Rate:		\$17.00/RSF FSG
Year Renovated:		2011
Parking:		5/1,000 SF
Building Area:		19,223 SF

FOR MORE INFORMATION CONTACT:

TIM P. ROGERS

tprogers@gcgcre.com | 720.476.5225

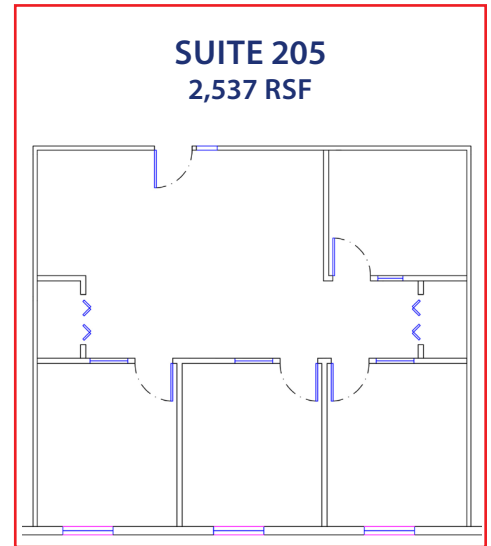
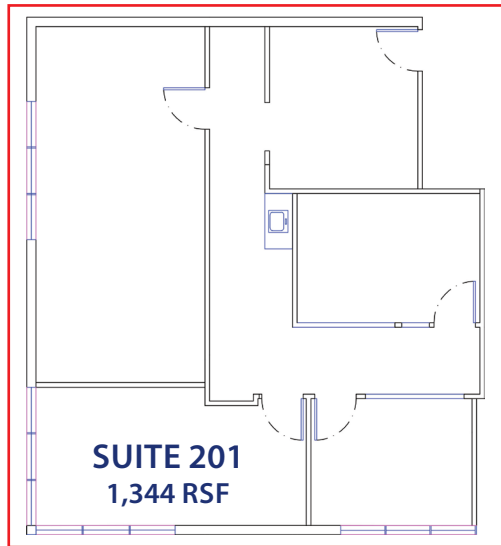
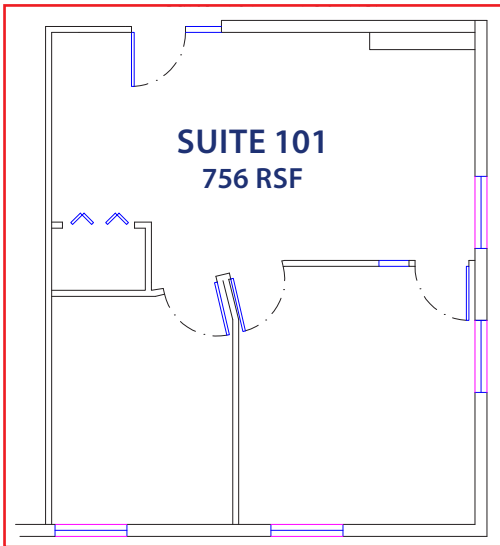
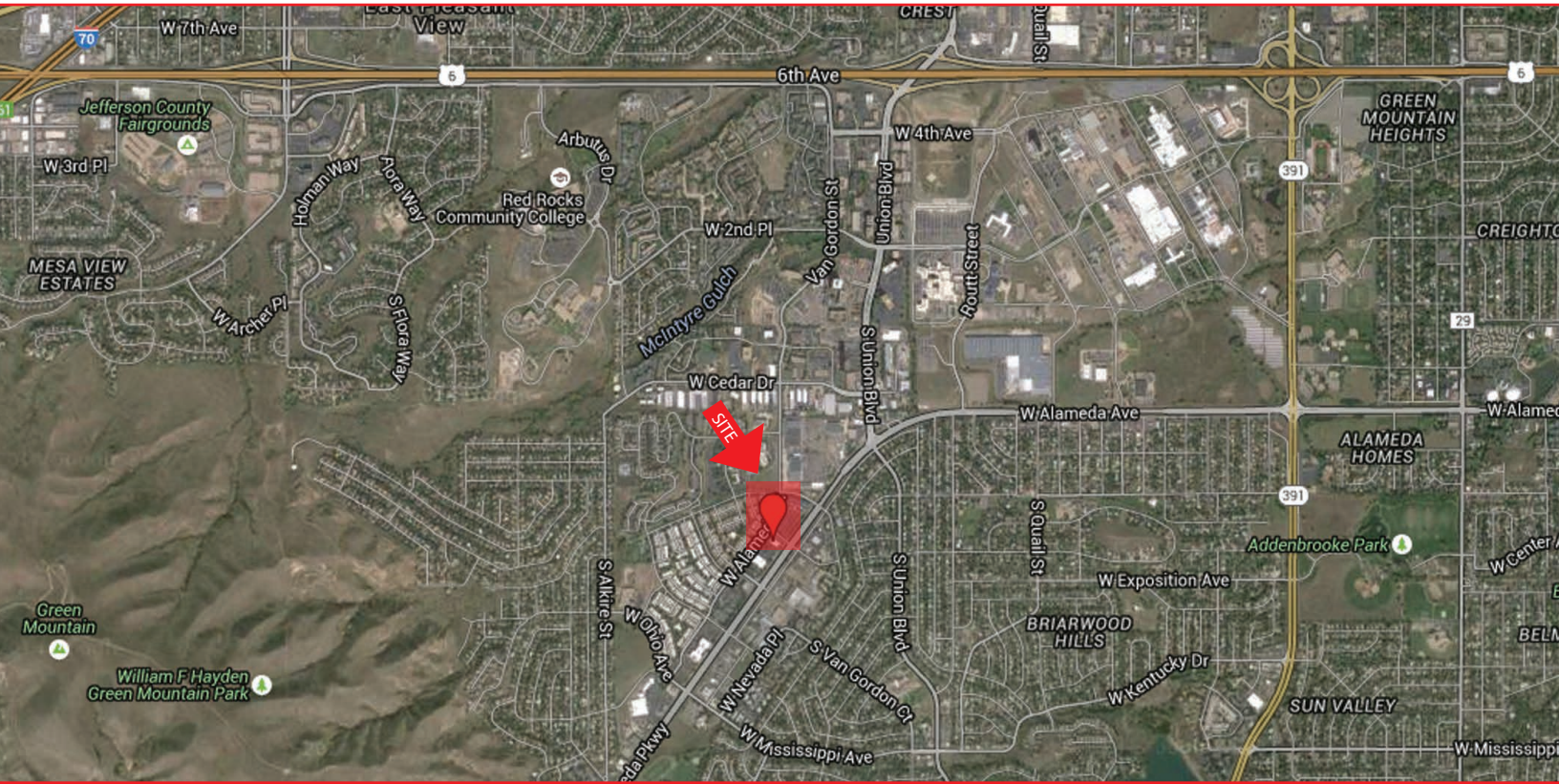
JAMIE MACBETH

jmacbeth@gcgcre.com | 720.476.5229



GENESEE
COMMERCIAL
GROUP, LLC

12211 WEST ALAMEDA PARKWAY
Lakewood, Colorado 80228



FOR MORE INFORMATION CONTACT:

TIM P. ROGERS

tprogers@gcgcre.com | 720.476.5225

JAMIE MACBETH

jmacbeth@gcgcre.com | 720.476.5229

GENESEE COMMERCIAL GROUP, LLC | 710 KIPLING STREET, SUITE 403 | LAKEWOOD, COLORADO 80215 | WWW.GCGCRE.COM

No warranty or representation is made as to the accuracy of the foregoing information. Terms of sale or lease and availability are subject to change or withdrawal without notice.