

12345 WEST ALAMEDA PARKWAY  
Lakewood, Colorado 80228



## PROPERTY FEATURES

- **Broker incentives available**
- Great Lakewood location near 6th Ave. and Union Boulevard
- Near the West Light Rail Station, St. Anthony's Hospital and the Denver Federal Center
- High quality building with renovated common areas
- Landlord will provide tenant finish
- On-site property management
- On-site conference facility
- 2021 Energy Star Certified Building

## PROPERTY SPECIFICATIONS

<b>Available:</b>	Suite 204	3,028 RSF <i>Available Now</i>
	Suite 301	3,039 RSF <i>Available Feb 2023</i>
	Suite 208	2,859 RSF <i>Available May 2023</i>
<b>Lease Rate:</b>		\$18.00-\$19.00/SF FSG
<b>Lease Term:</b>		3-5 Years
<b>Building Area:</b>		75,000 SF
<b>Number of Stories:</b>		Three
<b>Elevator:</b>		Yes
<b>Year Built:</b>		1980
<b>Parking:</b>		5/1,000 RSF

### FOR MORE INFORMATION CONTACT:

**JAMIE MACBETH**

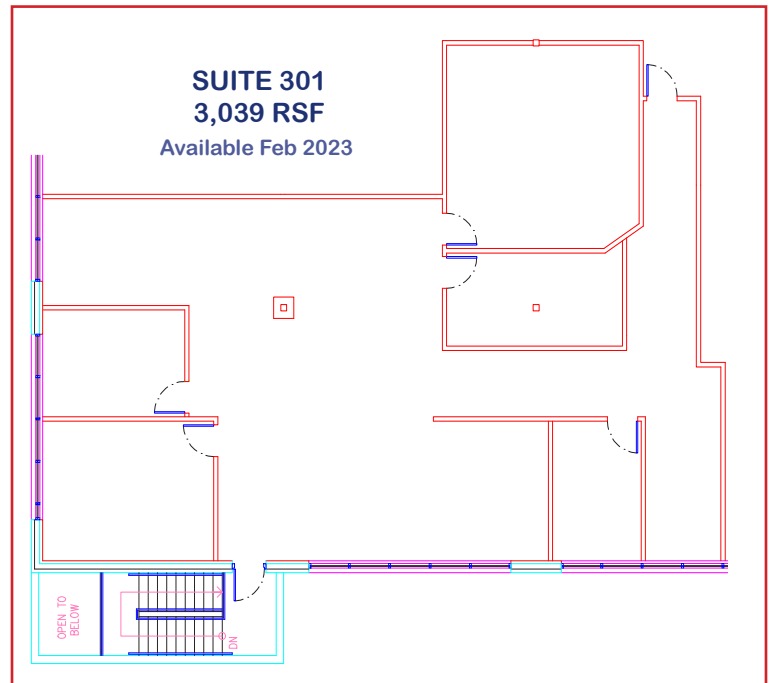
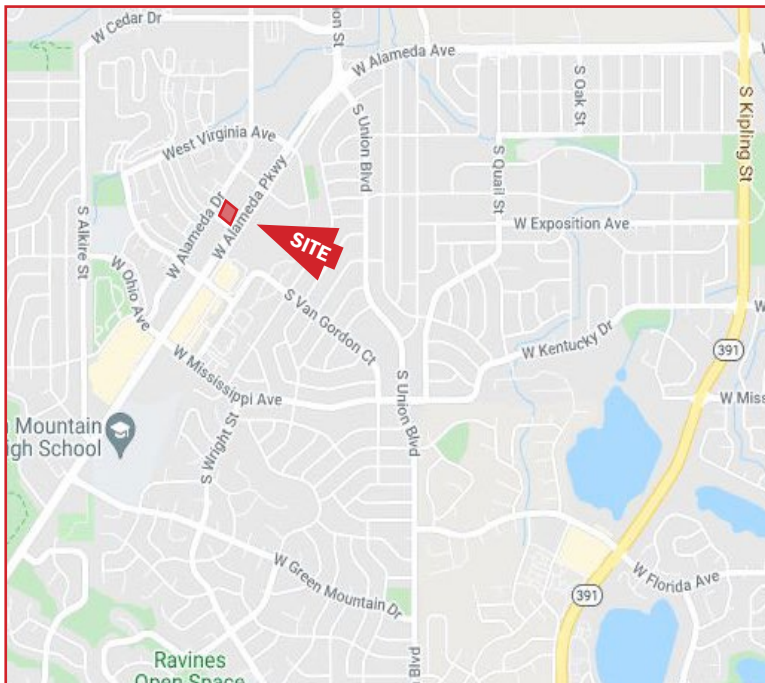
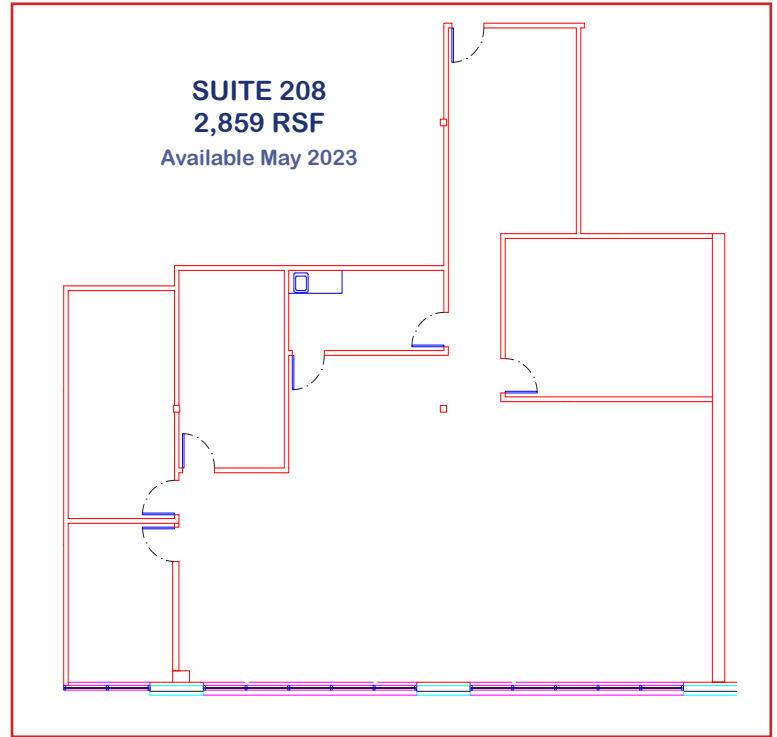
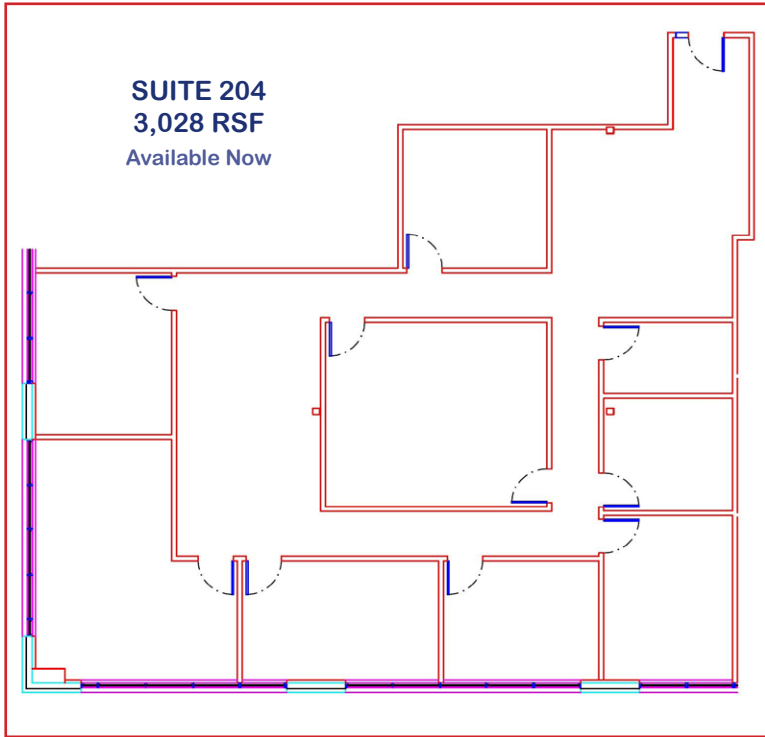
jmacbeth@gcgcre.com | 720.476.5229

**TIM P. ROGERS**

tprogers@gcgcre.com | 720.476.5225

**T. BLAKE ROGERS**

tblakerogers@gcgcre.com | 720.530.5788



**FOR MORE INFORMATION CONTACT:**

**JAMIE MACBETH**

jmacbeth@gcgcre.com | 720.476.5229

**TIM P. ROGERS**

tprogers@gcgcre.com | 720.476.5225

**T. BLAKE ROGERS**

tblakerogers@gcgcre.com | 720.530.5788

GENESEE COMMERCIAL GROUP, LLC | 710 KIJLING STREET, SUITE 403 | LAKEWOOD, COLORADO 80215 | WWW.GCGCRE.COM