



24928 GENESEE TRAIL ROAD Golden, Colorado 80401

PROPERTY SPECIFICATIONS

Suite 150	1,571 RSF
Suite 200	1,677 RSF
Building Size	7,281 SF
Stories	2
Year Built	2000
Lease Rate	\$14.50/RSF Gross



PROPERTY FEATURES

- Beautiful modern construction
- Outstanding views of the mountains and city
- Functional mixed use business park suitable for a variety of technical uses
- Corporate image building in a majestic foothills setting
- Abundant nearby amenities
- Located in unincorporated Jefferson County
- Local Ownership
- Connectivity through Comcast



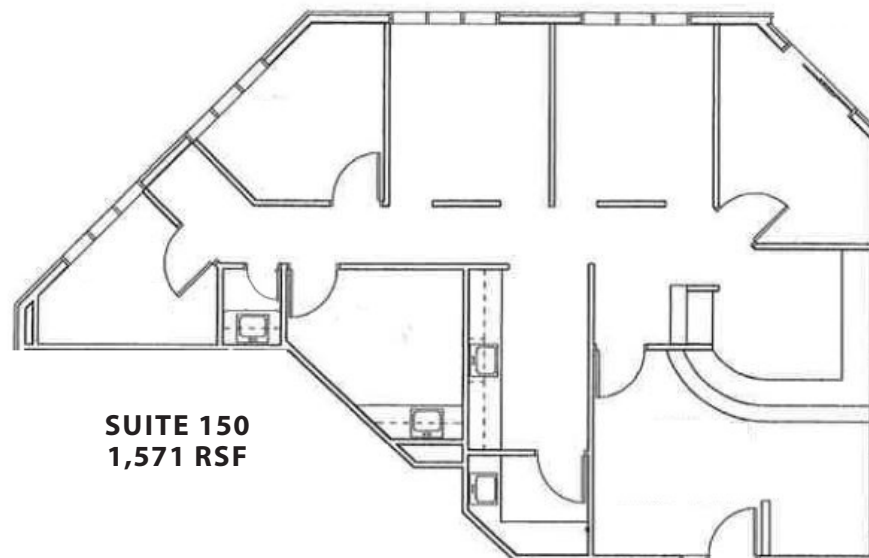
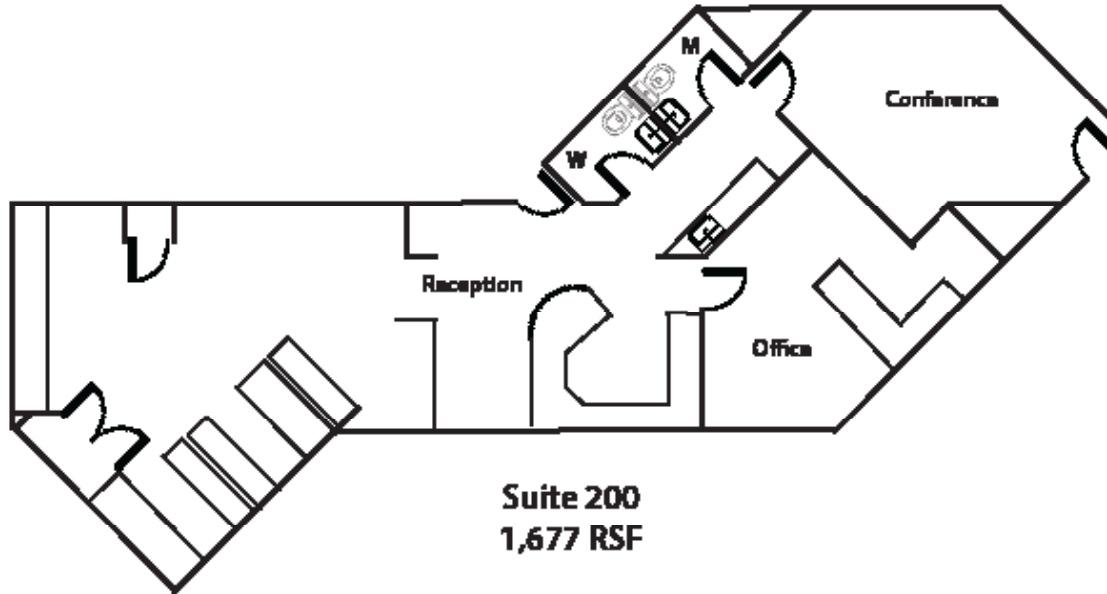
FOR MORE INFORMATION CONTACT:

RENÉE SPICER

rspicer@gcgcre.com | 720.476.5226

JAMIE MACBETH

jmacbeth@gcgcre.com | 720.476.5229



FOR MORE INFORMATION CONTACT:

RENÉE SPICER

rspicer@gcgcre.com | 720.476.5226

JAMIE MACBETH

jmacbeth@gcgcre.com | 720.476.5229