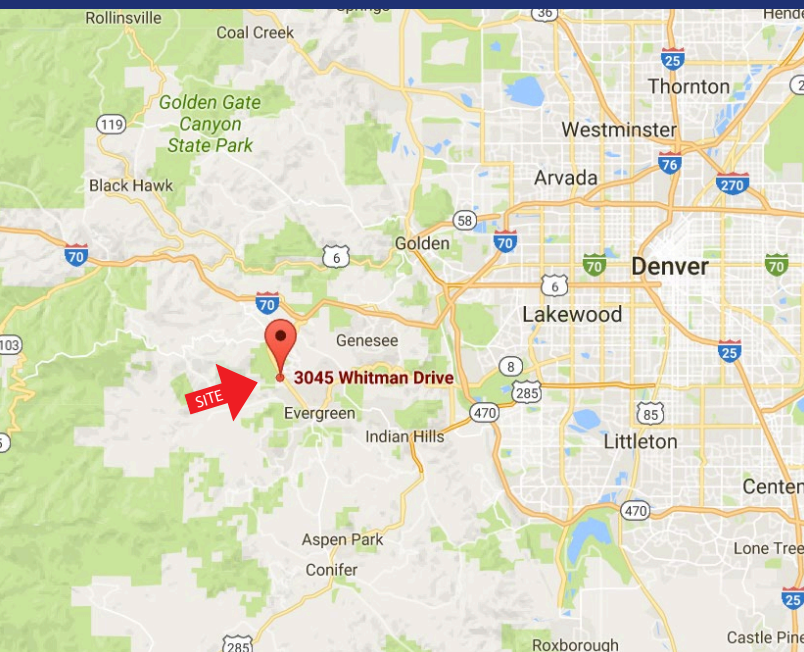




## 3045 WHITMAN DRIVE Evergreen, Colorado 80439

### PROPERTY FEATURES

- Newer building/modern architecture
- Great North Evergreen location
- Setting on a hillside with trees
- Property management office close by



### BUILDING SPECIFICATIONS

#### Available SF:

<b>Suite 101:</b>	1,405 RSF
<b>Suite 102:</b>	1,327 RSF
<b>Suite 104:</b>	1,460 RSF
<b>Suite 102/104:</b>	2,787 RSF
<b>Suite 202:</b>	401 RSF
<b>Suite 203/204:</b>	639-1,292 RSF

**Lease Rate:** \$18.50/RSF Gross

**Parking Ratio:** 3.90/1,000 RSF

**Building Size:** 6,650 RSF

**Year Built:** 2007

#### FOR MORE INFORMATION CONTACT:

**JAMIE MACBETH**

jmacbeth@gcgcre.com | 720.476.5229

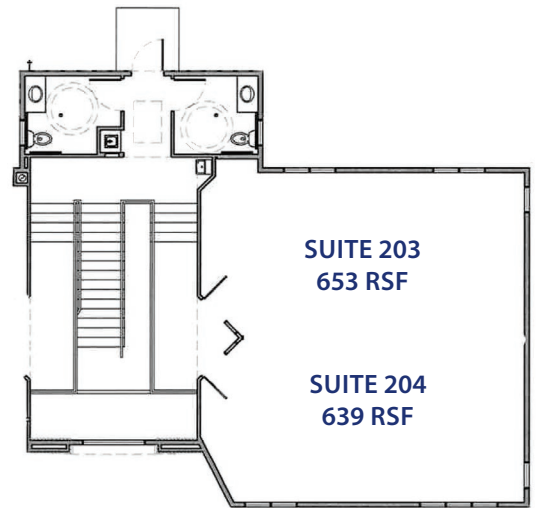
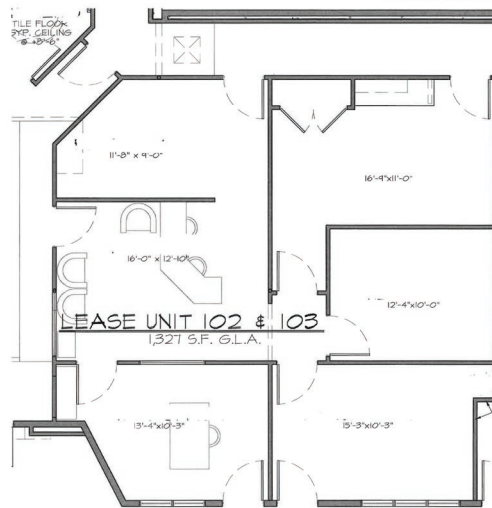
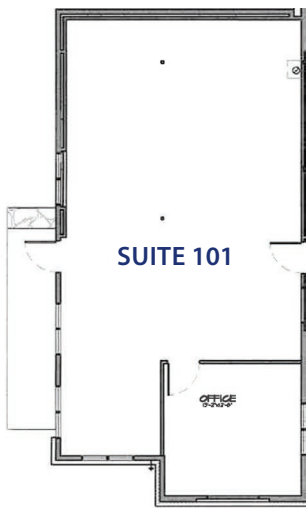
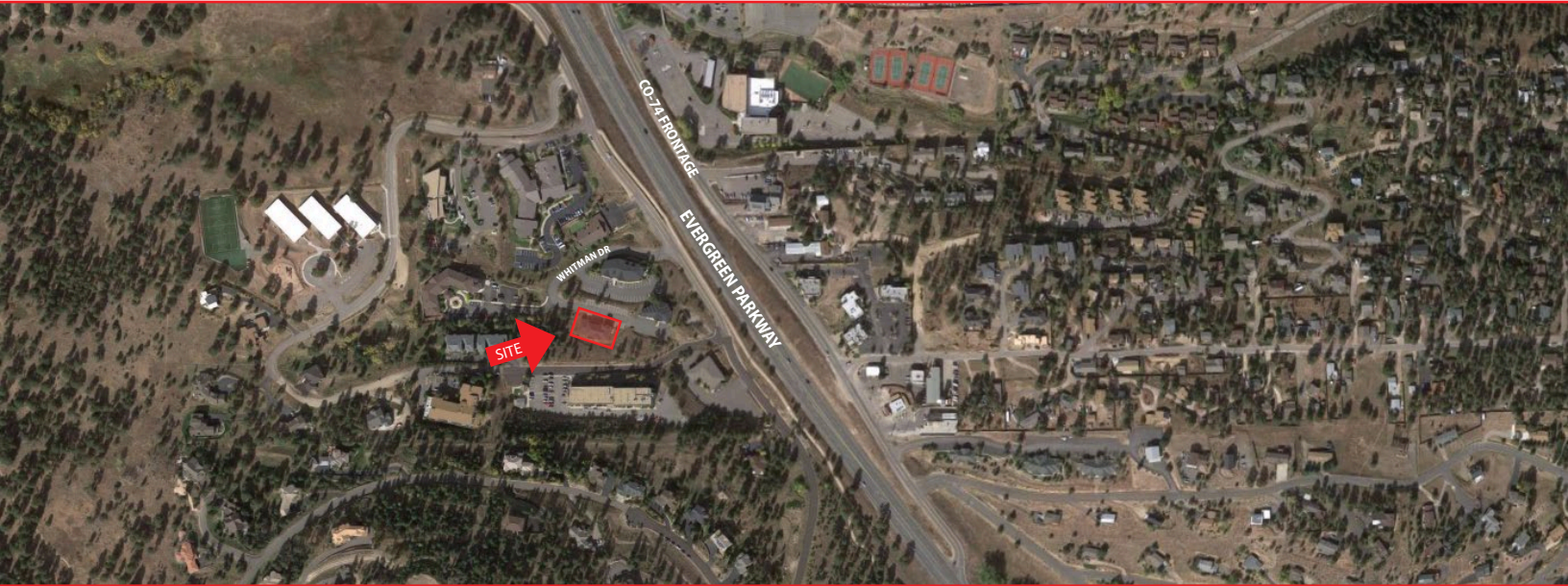
**RENÉE SPICER**

rspicer@gcgcre.com | 720.476.5226



**GENESEE**  
COMMERCIAL  
GROUP, LLC

**3045 WHITMAN DRIVE**  
Evergreen, Colorado 80439



No warranty or representation is made as to the accuracy of the foregoing information. Terms of sale or lease and availability are subject to change or withdrawal without notice.

**FOR MORE INFORMATION CONTACT:**

**JAMIE MACBETH**

jmacbeth@gcgcre.com | 720.476.5229

**RENÉE SPICER**

rspicer@gcgcre.com | 720.476.5226