



**3082 EVERGREEN PARKWAY**  
Evergreen, Colorado 80439



### PROPERTY FEATURES

- Southwestern Adobe
- Second floor suite
- Kitchenette
- Reception area and 3 offices
- Excellent visibility
- Beautifully landscaped
- Easy access
- Gorgeous views

### BUILDING SPECIFICATIONS

<b>Available:</b>	Suite H - 886 RSF
<b>Lease Rates:</b>	\$17.50/RSF FSG
<b>Building Size:</b>	8,293 SF
<b>Year Built:</b>	1993
<b>Stories:</b>	2
<b>Elevator:</b>	1

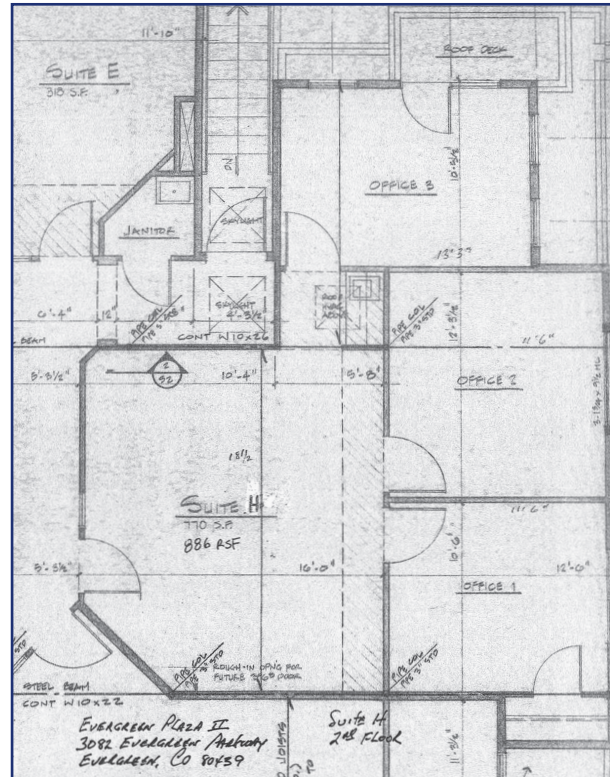
**FOR MORE INFORMATION CONTACT:**

**JAMIE MACBETH**

[jmacbeth@gcgcre.com](mailto:jmacbeth@gcgcre.com) | 720.476.5229

**RENÉE SPICER**

[rspicer@gcgcre.com](mailto:rspicer@gcgcre.com) | 720.476.5226



**SUITE H - 886 RSF**

No warranty or representation is made as to the accuracy of the foregoing information. Terms of sale or lease and availability are subject to change or withdrawal without notice.

**FOR MORE INFORMATION CONTACT:**

**JAMIE MACBETH**

[jmacbeth@gcgcre.com](mailto:jmacbeth@gcgcre.com) | 720.476.5229

**RENÉE SPICER**

[rspicer@gcgcre.com](mailto:rspicer@gcgcre.com) | 720.476.5226