



8321 S. SANGRE DE CRISTO ROAD Littleton, Colorado 80127

PROPERTY FEATURES

- Great Location Near C-470 and S. Kipling
- Retail/Restaurants Close-By
- Atrium Lobby Full of Natural Light
- Locally owned and managed



BUILDING SPECIFICATIONS

Available:	Suite 302	1,959 RSF
	Suite 202	1,159 RSF
Lease Rate:		\$19.50/RSF Gross
Year Built:		2006
Elevator:		One
Total Building SF:		17,434 RSF

FOR MORE INFORMATION CONTACT:

WILLIAM NETWAL

wnetwal@gcgcre.com | 720.476.5228

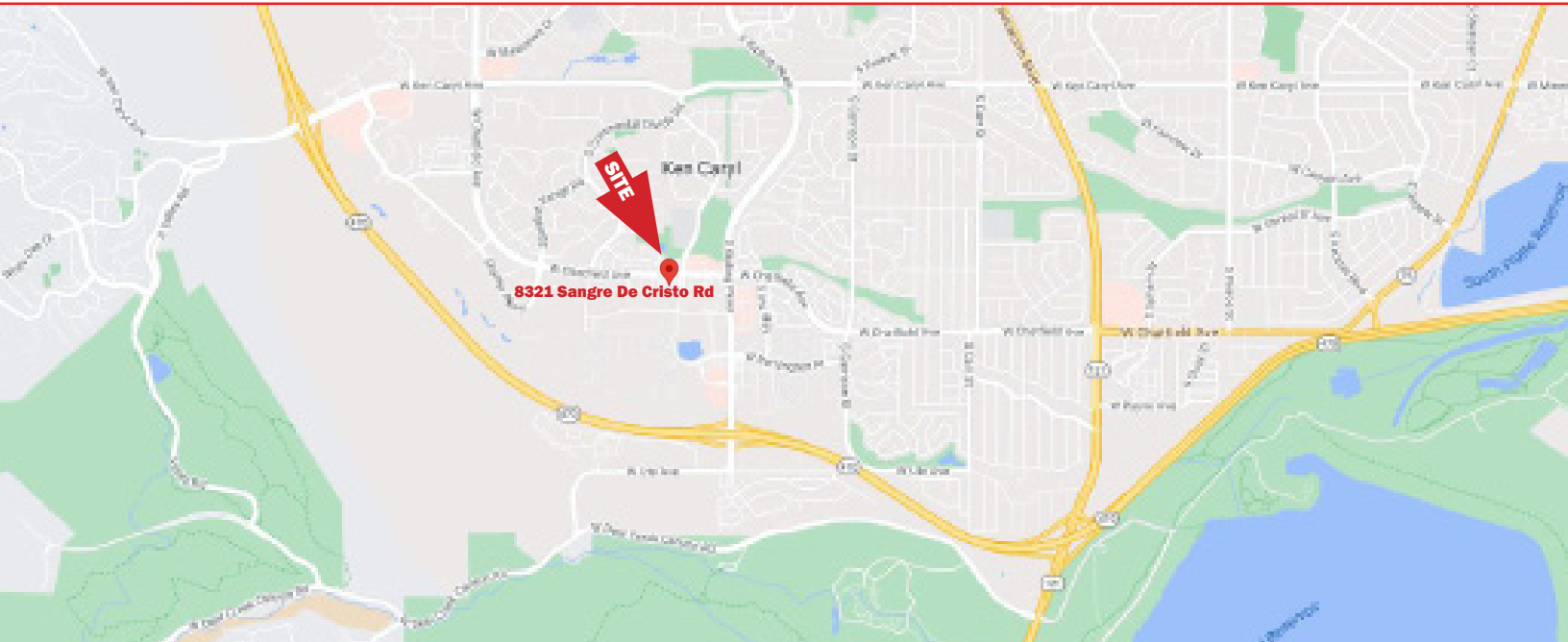
JAMIE MACBETH

jmacbeth@gcgcre.com | 720.476.5229



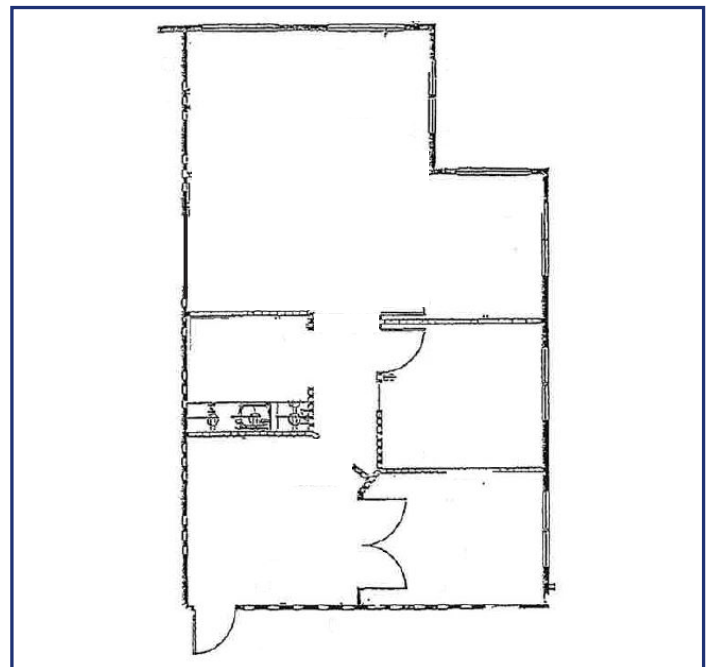
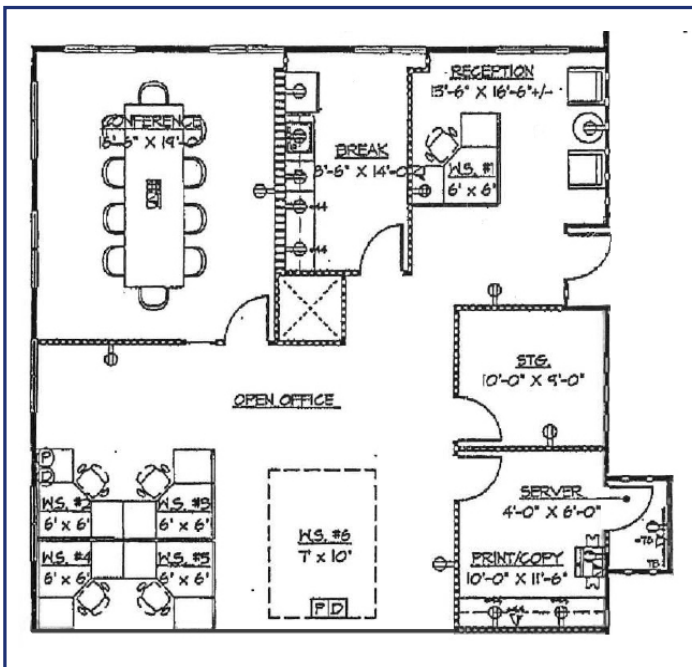
**GENESEE
COMMERCIAL
GROUP, LLC**

8321 S. SANGRE DE CRISTO ROAD
Littleton, Colorado 80127



SUITE 302
1,959 RSF

SUITE 202
1,159 RSF



FOR MORE INFORMATION CONTACT:

WILLIAM NETWAL

wnetwal@gcgcre.com | 720.476.5228

JAMIE MACBETH

jmacbeth@gcgcre.com | 720.476.5229

GENESEE COMMERCIAL GROUP, LLC | 710 KIPLING STREET, SUITE 403 | LAKEWOOD, COLORADO 80215 | WWW.GCGCRE.COM

No warranty or representation is made as to the accuracy of the foregoing information. Terms of sale or lease and availability are subject to change or withdrawal without notice.