

AVAILABLE SEPTEMBER 2019

616-655 MOSS STREET
Golden, Colorado 80401



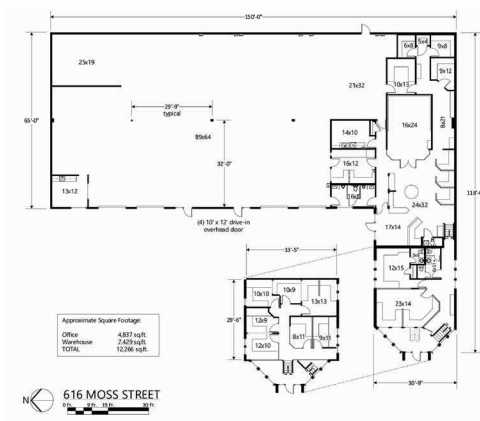
616 MOSS STREET



655 MOSS STREET

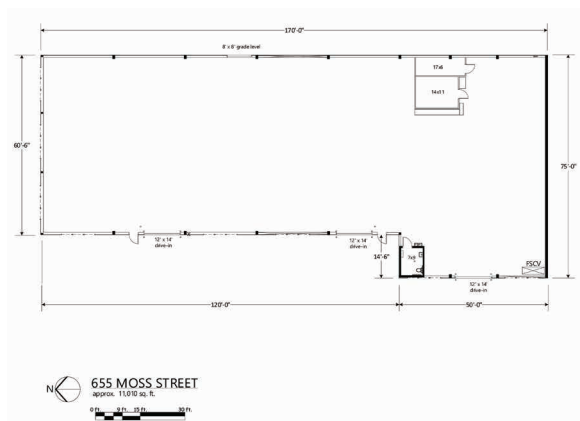
PROPERTY FEATURES

- 12,266 SF (4,837 office + 7,429 warehouse)
- 4 Drive in doors (10'x12')
- Zoned I-1 Industrial (Unincorporated Jefferson County)
- Small outside yard
- \$10.85/SF NNN (\$2.71/SF)



PROPERTY FEATURES

- 11,010 SF
- 22' Clear
- 3 Drive in doors (12'x14')
- New construction (2012)
- Zoned I-1 (Unincorporated Jefferson County)
- Sprinklered
- \$9.50/SF NNN (\$2.69/SF)



616/655 Moss is a two (2) building industrial complex located in Golden with visibility from 6th Avenue. 616 Moss is ideal for a manufacturer/tradesman and comes with high finished office. 655 Moss is a 22' clear industrial warehouse with 3 drive in doors. Can be leased separately or together. Quick access to 6th Ave and I-70.

FOR MORE INFORMATION CONTACT:

T. BLAKE ROGERS

tblakerogers@gcgcre.com | 720.476.5227

TIM P. ROGERS

tprogers@gcgcre.com | 720.476.5225



616 MOSS STREET



655 MOSS STREET



FOR MORE INFORMATION CONTACT:

T. BLAKE ROGERS

tblakerogers@gcgcre.com | 720.476.5227

TIM P. ROGERS

tprogers@gcgcre.com | 720.476.5225

GENESEE COMMERCIAL GROUP, LLC | 710 KIPLING STREET, SUITE 403 | LAKEWOOD, COLORADO 80215 | WWW.GCGCRE.COM

No warranty or representation is made as to the accuracy of the foregoing information. Terms of sale or lease and availability are subject to change or withdrawal without notice.