



3721 N EVERGREEN PARKWAY
Evergreen, Colorado 80439



PROPERTY FEATURES

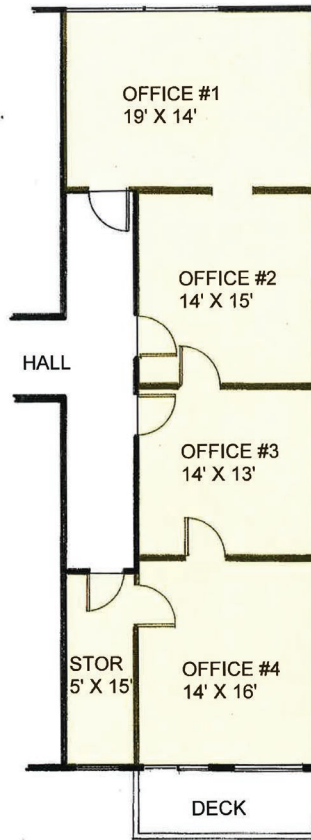
- Four offices on the second floor
- Building has an elevator
- Conveniently located on Evergreen Parkway
- Multiple retail and restaurant amenities nearby

PROPERTY SPECIFICATIONS

Available SF:	500-1,321 RSF
Lease Rate:	\$12.50-\$13.50 Modified Gross
Availability:	Available October 1, 2019 Sublease through October 31, 2022

FOR MORE INFORMATION CONTACT:

JAMIE MACBETH
jmacbeth@gcgcre.com | 720.476.5229



TENANT SPACE
3721 EVERGREEN PARKWAY
SIZE APPROXIMATE



FOR MORE INFORMATION CONTACT:

JAMIE MACBETH
jmacbeth@gcgcre.com | 720.476.5229