



**30792 SOUTHVIEW DRIVE**  
Evergreen, Colorado 80439



**PROPERTY FEATURES**

- Class A Foothills Office Building
- Upper floor available
- Kitchen in suite
- All offices have deck direct access
- Large windows that open to stunning mountain views

**PROPERTY SPECIFICATIONS**

<b>Available:</b>	Suite 201	2,700 RSF
<b>Lease Rate:</b>		\$20.00/RSF FSG
<b>Building Size:</b>		5,371 SF
<b>Stories:</b>		2
<b>Year Built:</b>		2004

**FOR MORE INFORMATION CONTACT:**

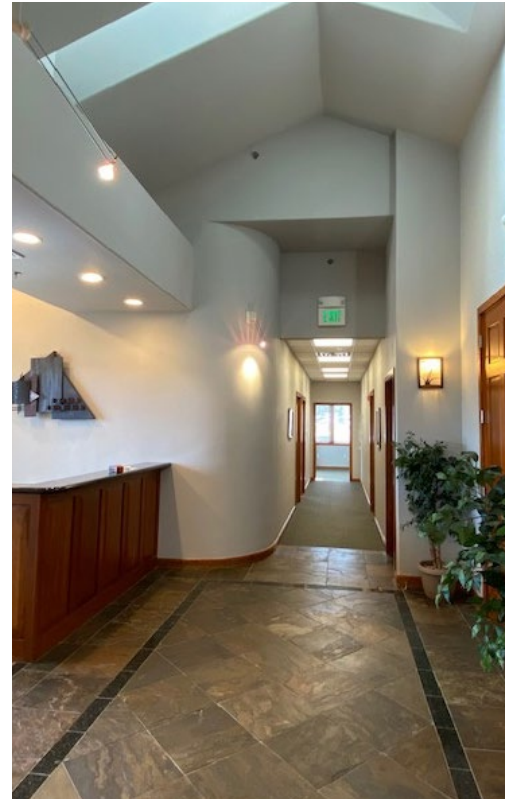
**RENÉE SPICER**

rspicer@gcgcre.com | 720.476.5226

**JAMIE MACBETH**

jmacbeth@gcgcre.com | 720.476.5229





**FOR MORE INFORMATION CONTACT:**

**RENÉE SPICER**

[rspicer@gcgcre.com](mailto:rspicer@gcgcre.com) | 720.476.5226

**JAMIE MACBETH**

[jmacbeth@gcgcre.com](mailto:jmacbeth@gcgcre.com) | 720.476.5229

GENESEE COMMERCIAL GROUP, LLC | 710 KIPLING STREET, SUITE 403 | LAKEWOOD, COLORADO 80215 | [WWW.GCGCRE.COM](http://WWW.GCGCRE.COM)