

575 UNION BLVD.  
Lakewood, Colorado 80228



## PROPERTY FEATURES

- Easy Access to W. 6th Avenue, I-70, and Colfax Avenue
- Near the West Line Light Rail Station and St. Anthony's Hospital
- LEED Green Building Certification 2011
- Nearby Restaurants and Retail

## PROPERTY SPECIFICATIONS

<b>Available:</b>	Suite 320	2,045 RSF
	Suite 310	4,684 RSF
	Suites 310/320	6,729 RSF
<b>Lease Rate:</b>		\$19.50/RSF FSG
<b>Location:</b>		Union Blvd. & W. 6th Ave.
<b>Building Size:</b>		34,000 RSF
<b>Elevator:</b>		One

**FOR MORE INFORMATION CONTACT:**

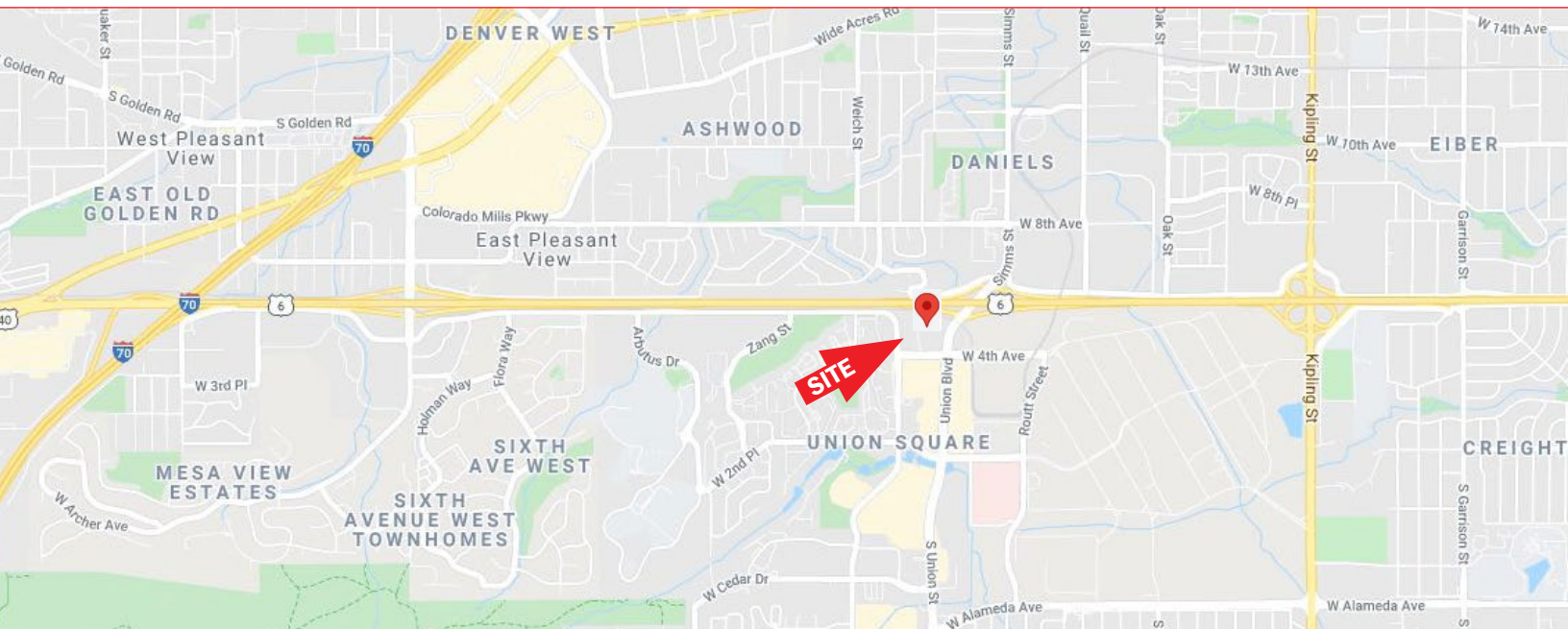
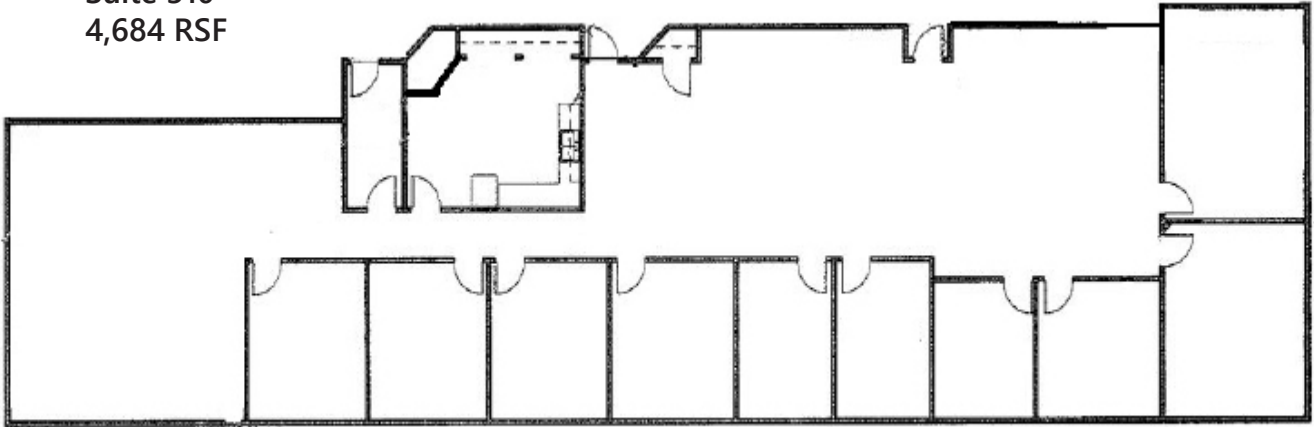
**JAMIE MACBETH** | [jmacbeth@gcgcre.com](mailto:jmacbeth@gcgcre.com) | 720.476.5229 | **WILLIAM NETWAL** | [wnetwal@gcgcre.com](mailto:wnetwal@gcgcre.com) | 720.476.5228



**GENESEEE**  
COMMERCIAL  
GROUP, LLC

**575 UNION BLVD.**  
Lakewood, Colorado 80228

Suite 310  
4,684 RSF



**FOR MORE INFORMATION CONTACT:**

**JAMIE MACBETH** | [jmacbeth@gcgcre.com](mailto:jmacbeth@gcgcre.com) | 720.476.5229 | **WILLIAM NETWAL** | [wnetwal@gcgcre.com](mailto:wnetwal@gcgcre.com) | 720.476.5228

GENESEEE COMMERCIAL GROUP, LLC | 710 KIPLING STREET, SUITE 403 | LAKEWOOD, COLORADO 80215 | [WWW.GCGCRE.COM](http://WWW.GCGCRE.COM)

No warranty or representation is made as to the accuracy of the foregoing information. Terms of sale or lease and availability are subject to change or withdrawal without notice.