



32065 CASTLE COURT
Evergreen, Colorado 80439



PROPERTY FEATURES

- Great North Evergreen location
- Well-maintained Class A building
- Common showers and lockers
- Access to walking path and Jeffco Open Space

BUILDING SPECIFICATIONS

Available Suites:	Suite 150	712 RSF - 3,280 RSF
	Suite 150A	712 RSF
	Suite 150B	756 RSF
	Suite 300 *	150 RSF - 2,447 RSF

** Suite 300 also available as individual offices as shown below*

Base Rental Rate:	\$12.00/RSF
NNN Expenses:	\$12.70/RSF

Available Offices:	Suites 300A - 300H	\$925.00/mo
---------------------------	--------------------	-------------

Building Size:	16,605
Year Built:	1999
Stories:	3

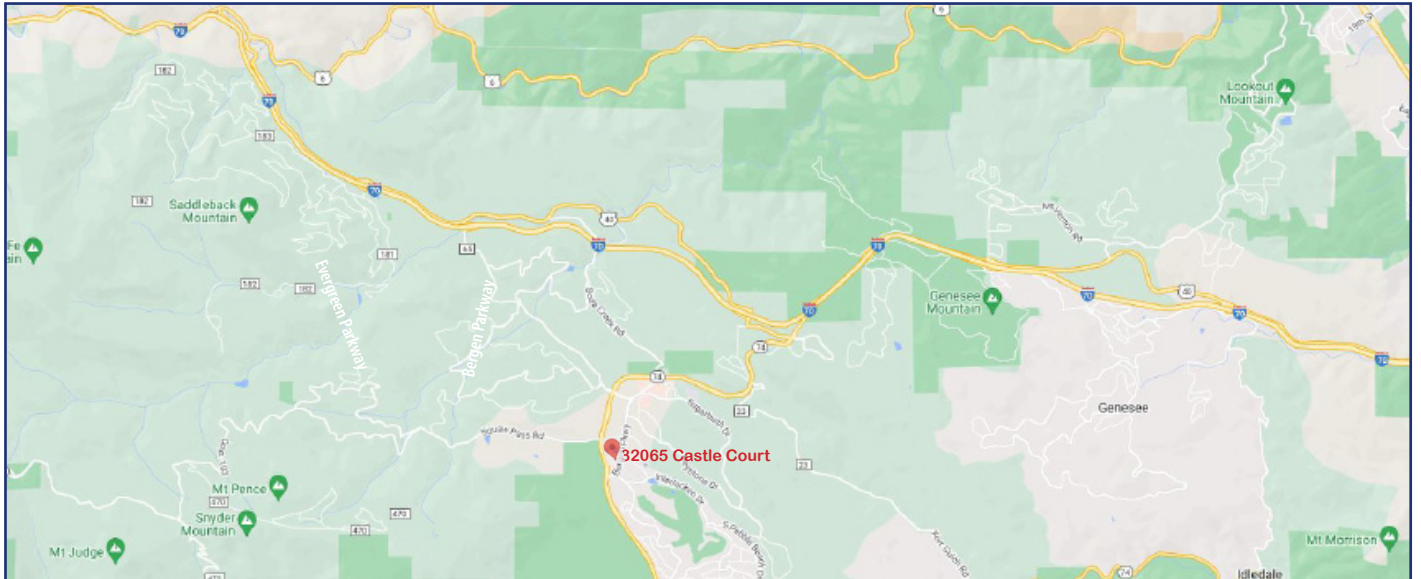
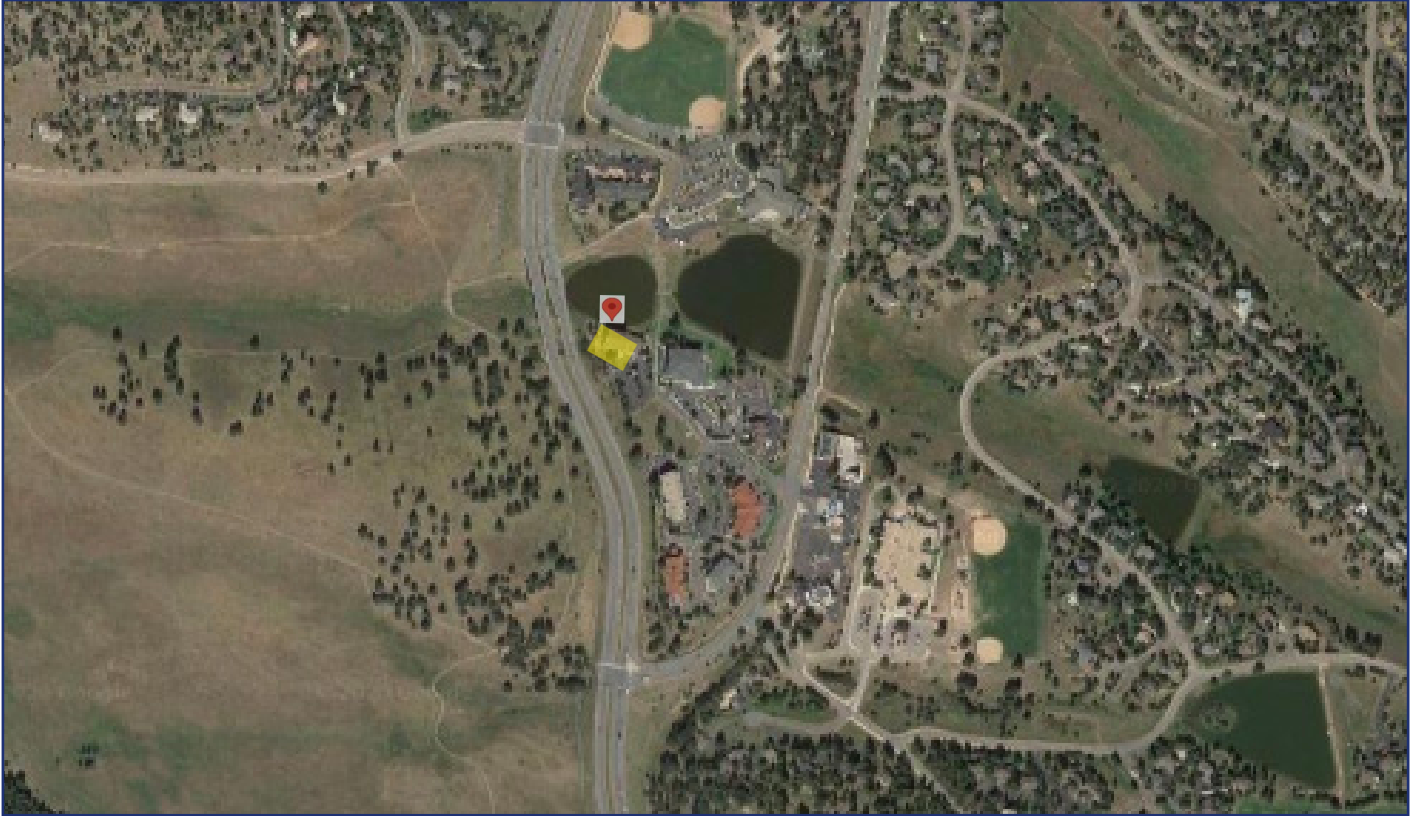
FOR MORE INFORMATION CONTACT:

RENÉE SPICER

rspicer@gcgcre.com | 720.476.5226

JAMIE MACBETH

jmacbeth@gcgcre.com | 720.476.5229



No warranty or representation is made as to the accuracy of the foregoing information. Terms of sale or lease and availability are subject to change or withdrawal without notice.

FOR MORE INFORMATION CONTACT:

RENÉE SPICER

rspicer@gcgcre.com | 720.476.5226

JAMIE MACBETH

jmacbeth@gcgcre.com | 720.476.5229