



### 32065 CASTLE COURT Evergreen, Colorado 80439



#### PROPERTY FEATURES

- Great North Evergreen location
- Class A Building in Evergreen
- Well maintained building
- Shared showers and lockers
- Direct access to outdoor patio
- Partially open ceiling in Suite
- Access to walking path

#### BUILDING SPECIFICATIONS

<b>Available RSF:</b>	Suite 150	3,280 RSF
<b>Lease Rate:</b>		\$24.00/RSF FSG
<b>Building Size:</b>		16,608
<b>Year Built:</b>		1999
<b>Stories:</b>		3

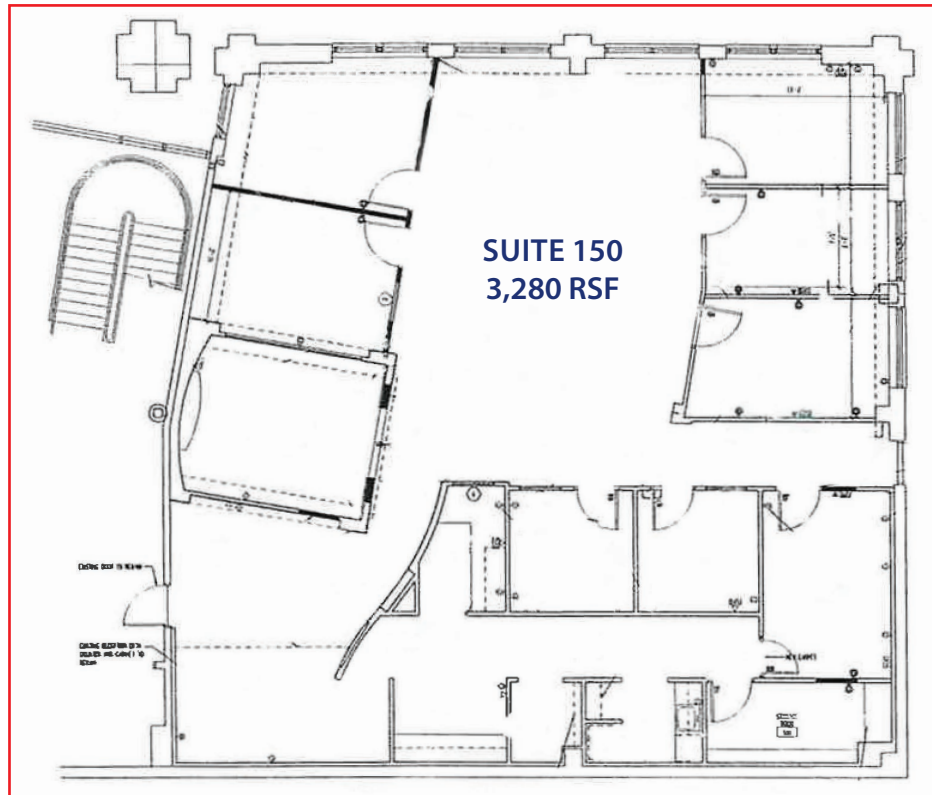
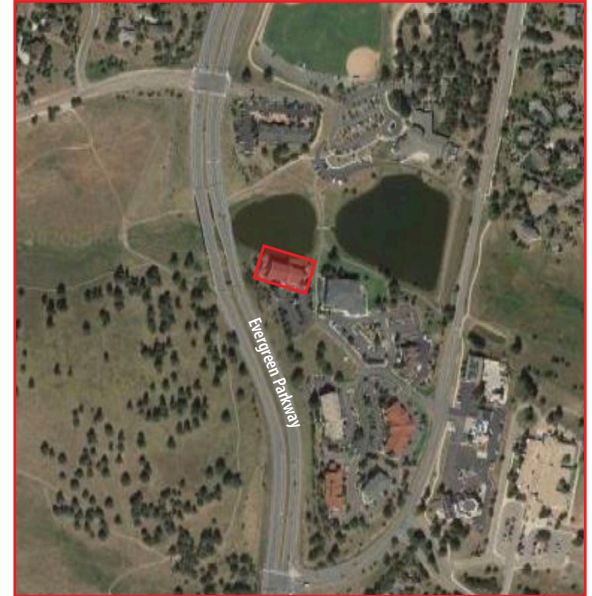
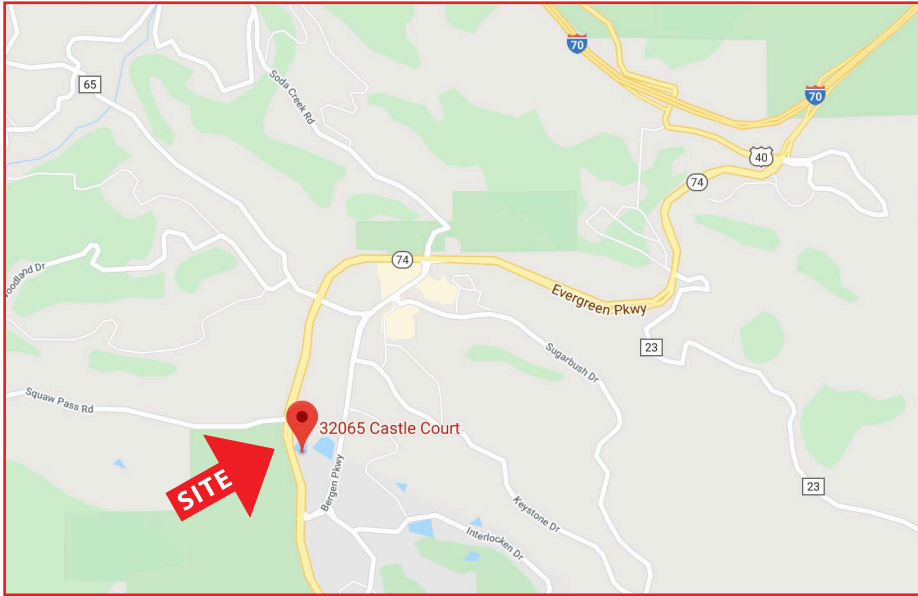
**FOR MORE INFORMATION CONTACT:**

**RENÉE SPICER**

rspicer@gcgcre.com | 720.476.5226

**JAMIE MACBETH**

jmacbeth@gcgcre.com | 720.476.5229



No warranty or representation is made as to the accuracy of the foregoing information. Terms of sale or lease and availability are subject to change or withdrawal without notice.

**FOR MORE INFORMATION CONTACT:**

**RENÉE SPICER**

rspicer@gcgcre.com | 720.476.5226

**JAMIE MACBETH**

jmacbeth@gcgcre.com | 720.476.5229