



8110 SHAFFER PARKWAY
Littleton, Colorado 80127



PROPERTY FEATURES

- Located in the heart of Ken Caryl Business Park
- Corporate office setting
- Coffee bar
- Eleven private offices, nine on glass
- 850 SF training room
- Two restrooms
- Covenant controlled business park
- Suitable for a variety of uses
- Local ownership and management

BUILDING SPECIFICATIONS

Available SF:	3,815 SF	Clear Height:	Office: 9'-0"
Office Area SF:	3,815 SF	Power:	110/208, 3 Phase
Lease Rate:	\$14.75/SF NNN	Zoned:	PD
NNN Expenses:	\$5.55 SF	Sprinklers:	Wet

FOR MORE INFORMATION CONTACT:

TIM P. ROGERS

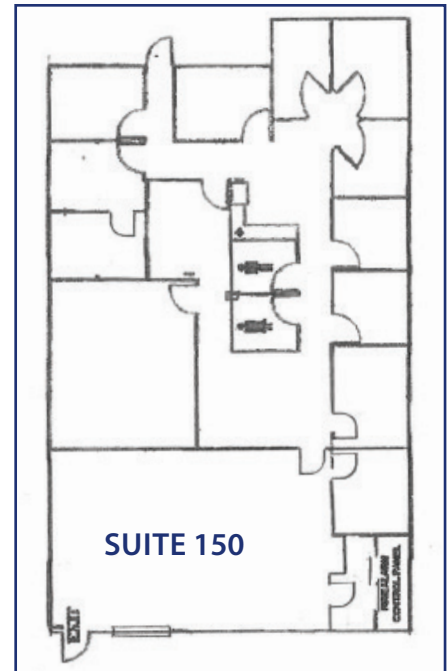
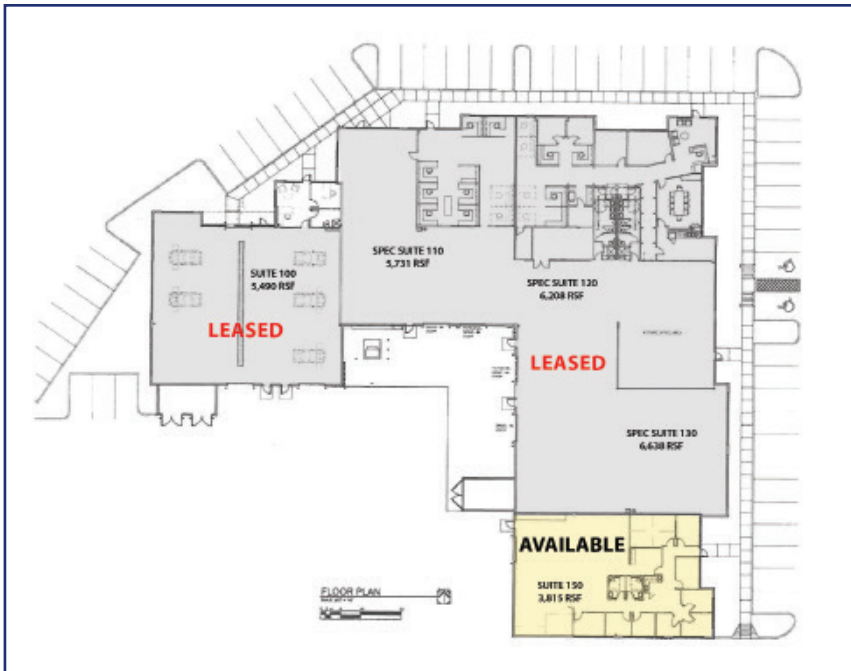
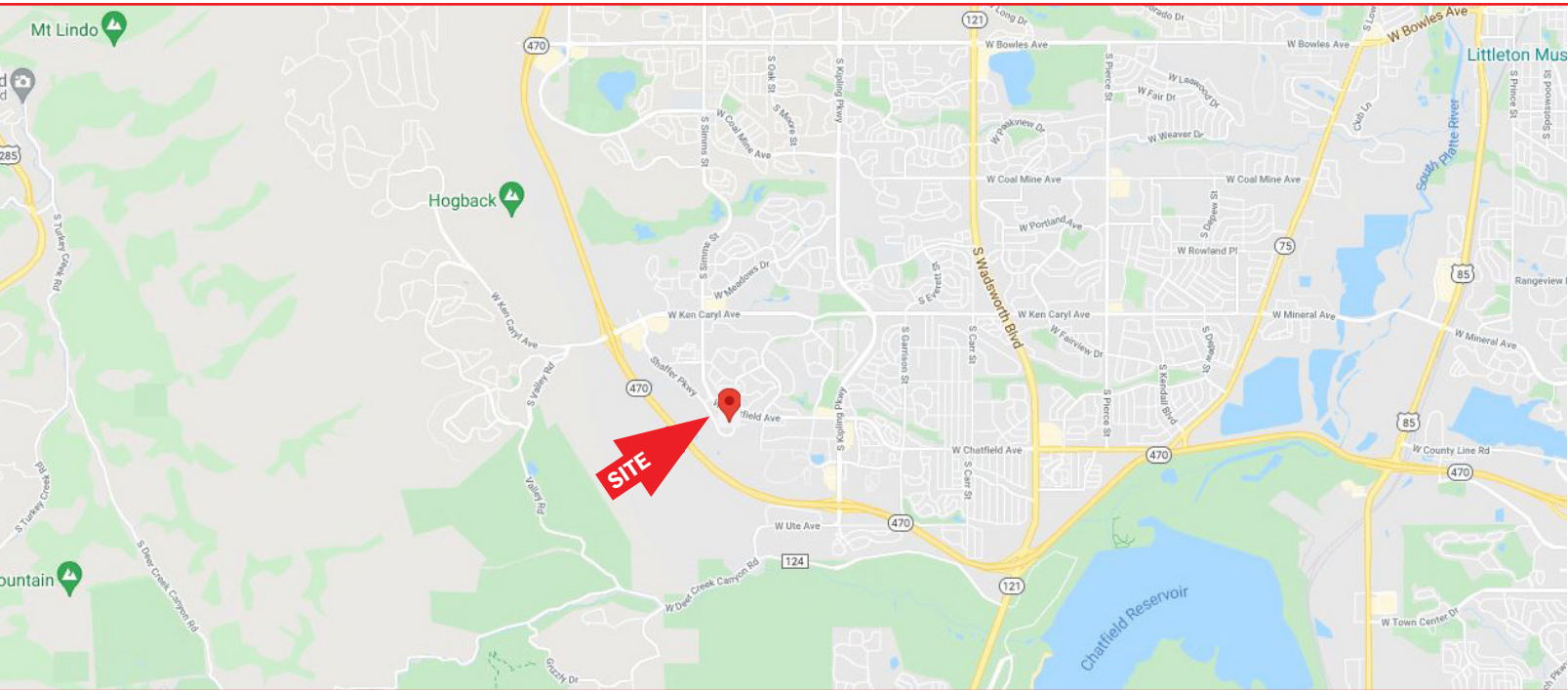
T. BLAKE ROGERS

trogers@gcgcre.com | 720.476.5225 tblakerogers@gcgcre.com | 720.476.5227



GENESEE
COMMERCIAL
GROUP, LLC

8110 SHAFFER PARKWAY, UNIT 150
Littleton, Colorado 80127



FOR MORE INFORMATION CONTACT:

TIM P. ROGERS

T. BLAKE ROGERS

trogers@gcgre.com | 720.476.5225 tblakerogers@gcgre.com | 720.476.5227

GENESEE COMMERCIAL GROUP, LLC | 710 KIPLING STREET, SUITE 403 | LAKEWOOD, COLORADO 80215 | WWW.GCGCRE.COM

No warranty or representation is made as to the accuracy of the foregoing information. Terms of sale or lease and availability are subject to change or withdrawal without notice.