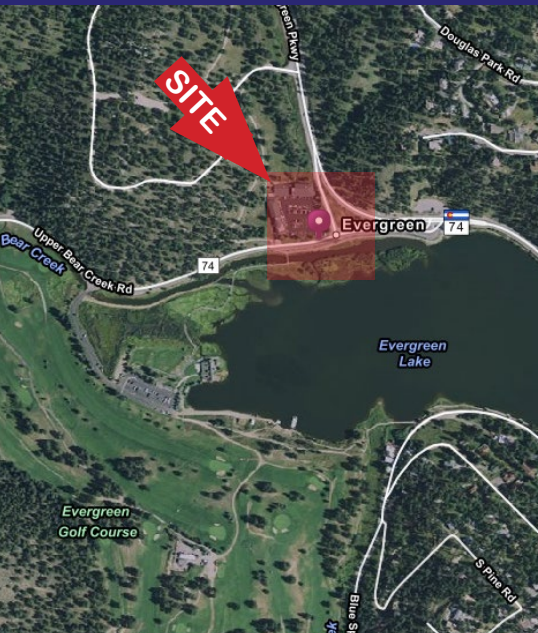




29029 UPPER BEAR CREEK ROAD Evergreen, Colorado 80439

PROPERTY SPECIFICATIONS

Suite D	1,085-2,281 RSF
Monthly Rent	\$24.00/RSF MG
Building Size	27,000 SF
Stories	2-3
Parking Ratio	4/1,000



PROPERTY FEATURES

- Large suite available with multiple offices
- Work, walk, eat, drink, reflect and enjoy...Life at the Lake
- Surrounded on all sides by parks and open space
- Local ownership
- Excellent parking with adjacent walking trails
- Located at the intersection of Evergreen Parkway and Upper Bear Creek Road

FOR MORE INFORMATION CONTACT:

JAMIE MACBETH

jmacbeth@gcgcre.com | 720.476.5229

RENÉE SPICER

rspicer@gcgcre.com | 720.476.5226