



3092 EVERGREEN PARKWAY

Evergreen, Colorado 80439



PROPERTY FEATURES

- Southwestern Adobe Viga style architecture
- Located directly off busy Evergreen Parkway
- Retail amenities nearby
- Large 2nd floor deck accessible to all tenants
- Suite 201 has direct access to large deck

PROPERTY SPECIFICATIONS

Available:	Suite 100	1,485 RSF
	Suite 201	860 RSF
Lease Rate:		\$22.00/RSF MG
Building Size:		5,749 SF
Stories:		Two
Year Built:		2007

FOR MORE INFORMATION CONTACT:

RENÉE SPICER

rspicer@gcgcre.com | 720.476.5226

JAMIE MACBETH

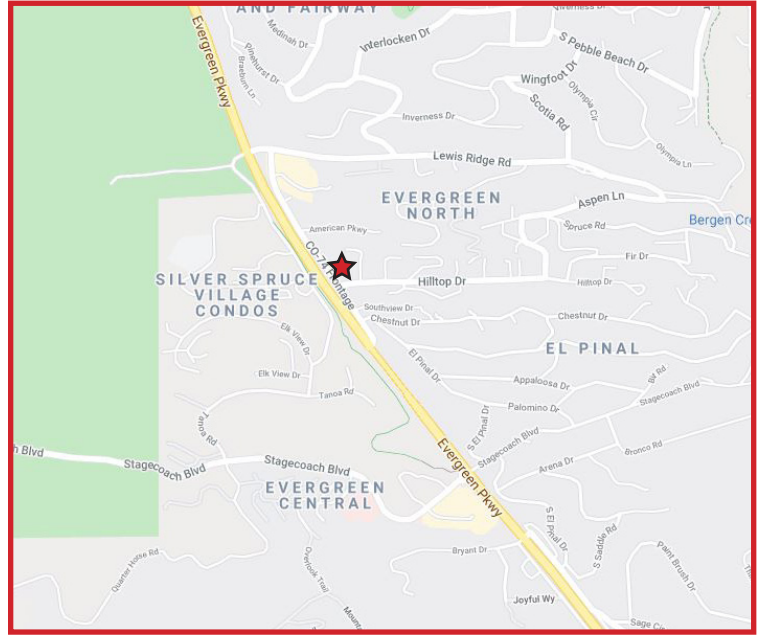
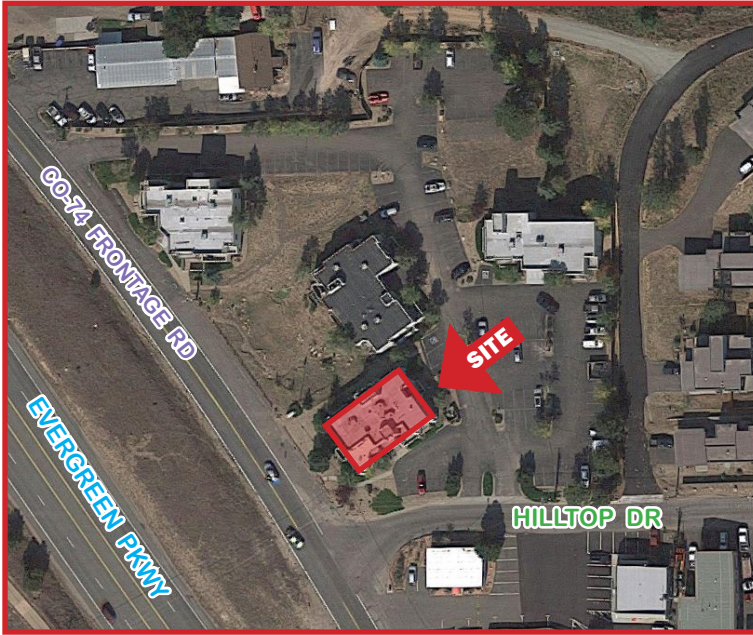
jmacbeth@gcgcre.com | 720.476.5229



GENESEE
COMMERCIAL
GROUP, LLC

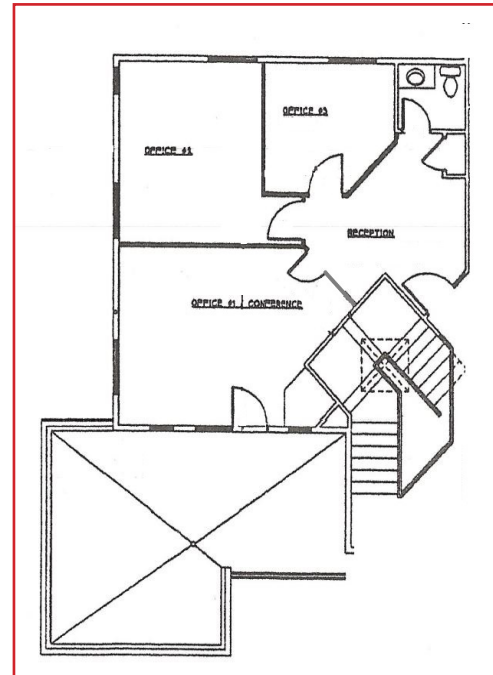
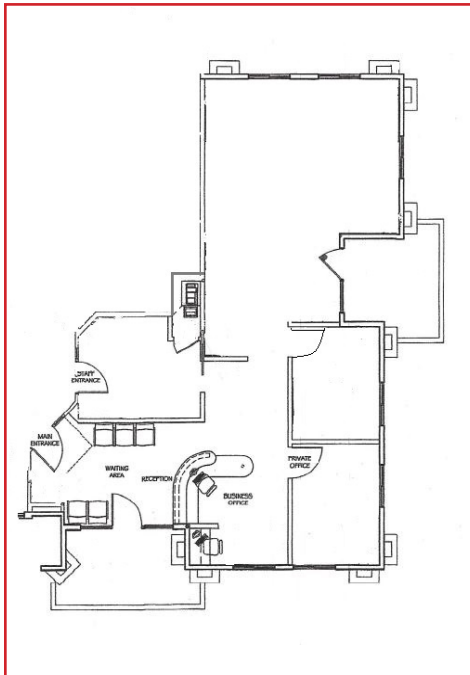
3092 EVERGREEN PARKWAY

Evergreen, Colorado 80439



SUITE 100
1,485 RSF

SUITE 201
860 RSF



FOR MORE INFORMATION CONTACT:

RENÉE SPICER

rspicer@gcgcre.com | 720.476.5226

JAMIE MACBETH

jmacbeth@gcgcre.com | 720.476.5229

GENESEE COMMERCIAL GROUP, LLC | 710 KIPLING STREET, SUITE 403 | LAKEWOOD, COLORADO 80215 | WWW.GCGCRE.COM

No warranty or representation is made as to the accuracy of the foregoing information. Terms of sale or lease and availability are subject to change or withdrawal without notice.