



3092 EVERGREEN PARKWAY

Evergreen, Colorado 80439



PROPERTY FEATURES

- Prime location in north Evergreen
- Southwestern Adobe Viga-style architecture
- First floor suite for easy access
- Abundant parking
- 2 exterior, private, patios with the suite
- Newer carpeting and luxury lighting
- Building exterior signage available

PROPERTY SPECIFICATIONS

| | | |
|----------------|-----------|----------------|
| Available: | Suite 100 | 1,368 RSF |
| Lease Rate: | | \$19.00/RSF MG |
| Lease Term: | | 2-5 years |
| Building Size: | | 5,749 SF |
| Stories: | | Two |
| Year Built: | | 2007 |

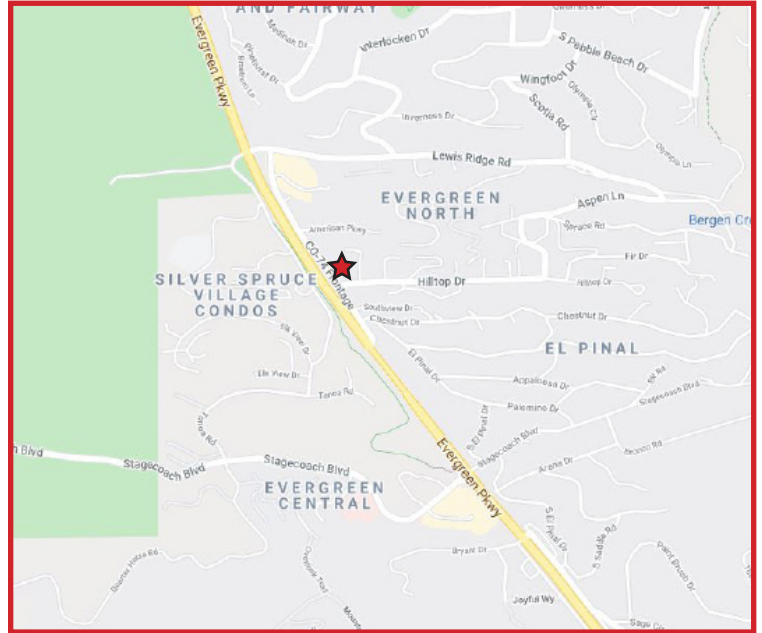
FOR MORE INFORMATION CONTACT:

RENÉE SPICER

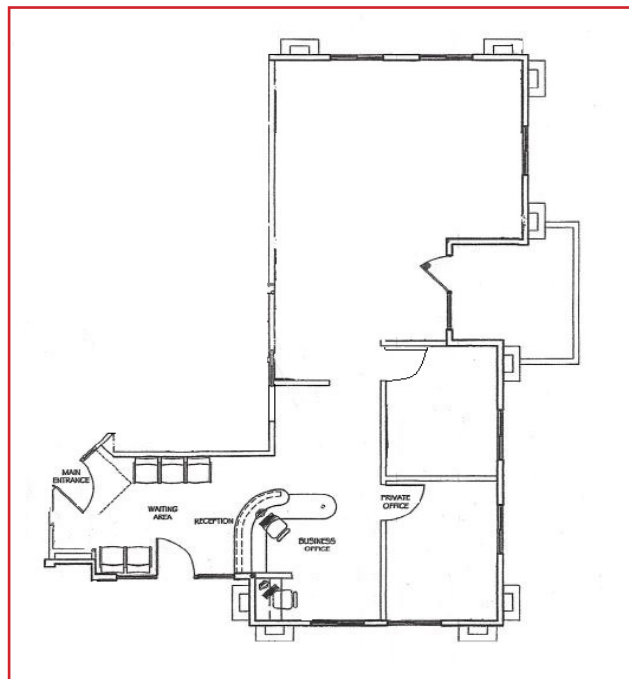
rspicer@gcgcre.com | 720.476.5226

JAMIE MACBETH

jmacbeth@gcgcre.com | 720.476.5229



SUITE 100
1,368 RSF



FOR MORE INFORMATION CONTACT:

RENÉE SPICER

rspicer@gcgcre.com | 720.476.5226

JAMIE MACBETH

jmacbeth@gcgcre.com | 720.476.5229