



3092 EVERGREEN PARKWAY

Evergreen, Colorado 80439



PROPERTY FEATURES

- Southwestern Adobe Viga-style architecture
- Located directly off busy Evergreen Parkway
- Retail amenities nearby
- Building exterior signage available
- Large 2nd floor deck accessible to all tenants

PROPERTY SPECIFICATIONS

Available:	Suite 100	1,368 RSF
Lease Rate:		\$19.00/RSF MG
Building Size:		5,749 SF
Stories:		Two
Year Built:		2007

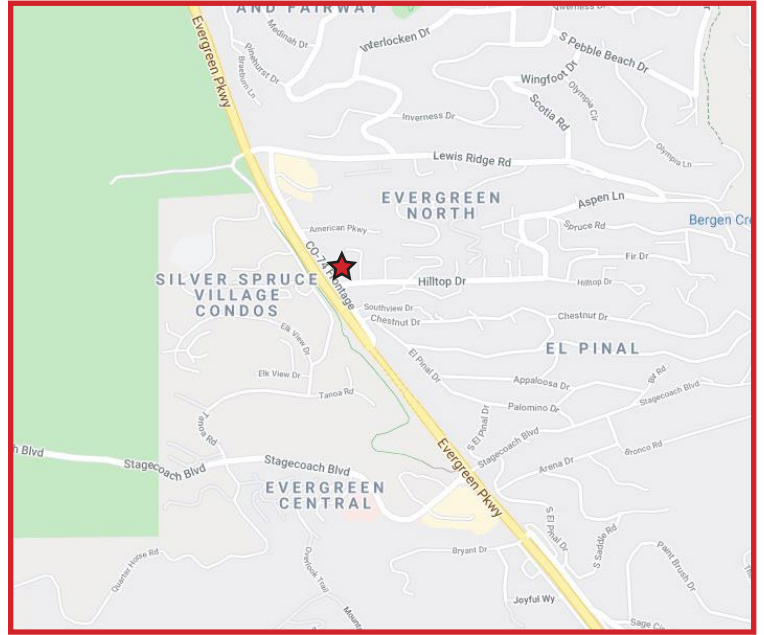
FOR MORE INFORMATION CONTACT:

RENÉE SPICER

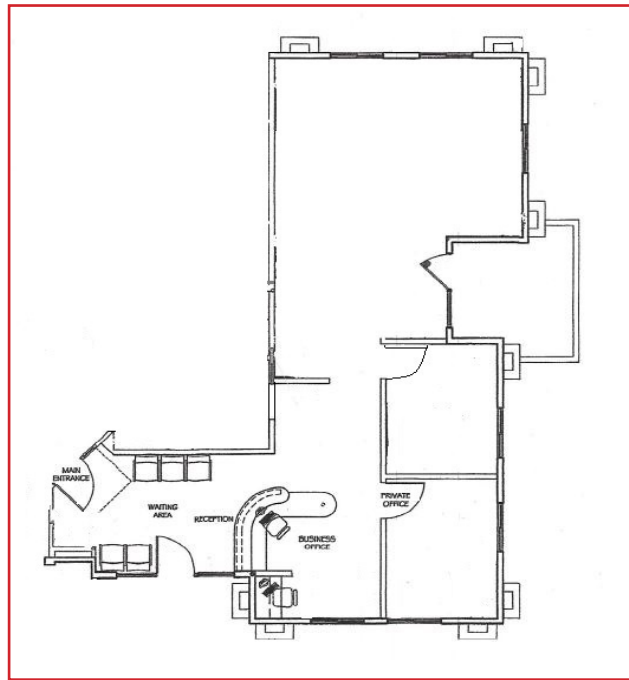
rspicer@gcgcre.com | 720.476.5226

JAMIE MACBETH

jmacbeth@gcgcre.com | 720.476.5229



SUITE 100
1,368 RSF



FOR MORE INFORMATION CONTACT:

RENÉE SPICER
rspicer@gcgcre.com | 720.476.5226

JAMIE MACBETH
jmacbeth@gcgcre.com | 720.476.5229