

523 PARK POINT DRIVE
Golden, Colorado 80401



PROPERTY FEATURES

- One of the newest buildings in Genesee
- Nine to ten foot interior ceilings
- Large windows wrap the exterior
- Excellent light and outstanding views of the foothills
- Twenty minutes from downtown Denver, easy access via Interstate 70
- Some covered parking available

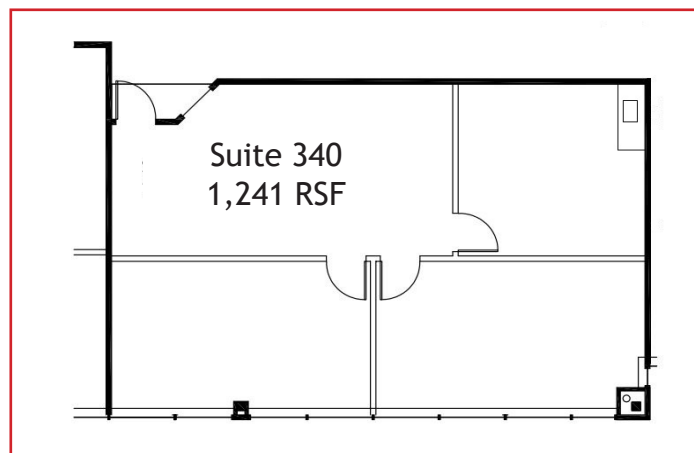
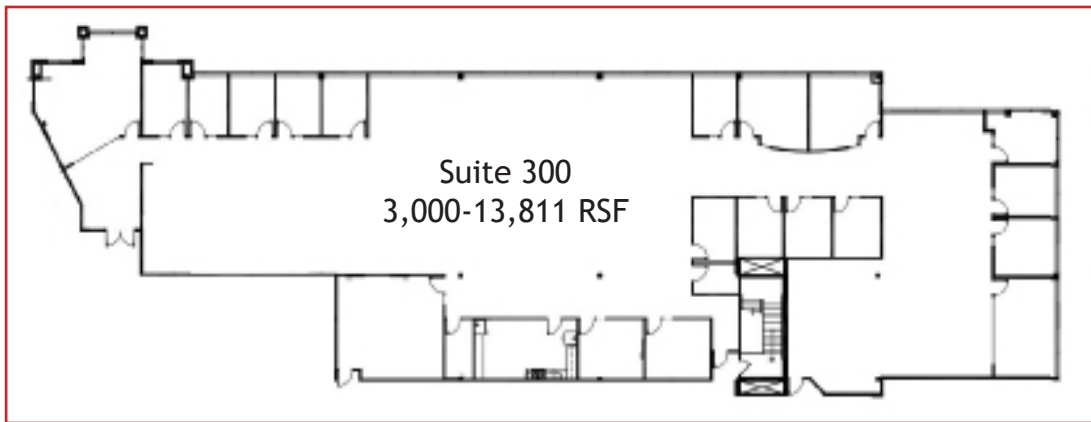
PROPERTY SPECIFICATIONS

Available:	Suite 340	1,241 RSF
	Suite 300	3,000-13,811RSF
Lease Rate:	\$21.00-\$22.00/SF FSG	
Year Built:	2000	
Stories:	3	
Building Size:	59,773 SF	

FOR MORE INFORMATION CONTACT:

JAMIE MACBETH
jmacbeth@gcgcre.com | 720.476.5229

RENÉE SPICER
rspicer@gcgcre.com | 720.476.5226



FOR MORE INFORMATION CONTACT:

JAMIE MACBETH

jmacbeth@gcgcre.com | 720.476.5229

RENÉE SPICER

rspicer@gcgcre.com | 720.476.5226