



**3082 EVERGREEN PARKWAY**  
Evergreen, Colorado 80439



### PROPERTY FEATURES

- Southwestern Adobe
- First floor suite
- Excellent visibility
- Beautifully landscaped
- Easy access
- Gorgeous views
- Sublease through January 31, 2023
- Landlord will extend lease term

### BUILDING SPECIFICATIONS

<b>Available:</b>	Suite C - 1,553 RSF
<b>Lease Rates:</b>	\$17.50/RSF MG
<b>Building Size:</b>	8,293 SF
<b>Year Built:</b>	1993
<b>Stories:</b>	2
<b>Elevator:</b>	1

**FOR MORE INFORMATION CONTACT:**

**JAMIE MACBETH**

jmacbeth@gcgcre.com | 720.476.5229

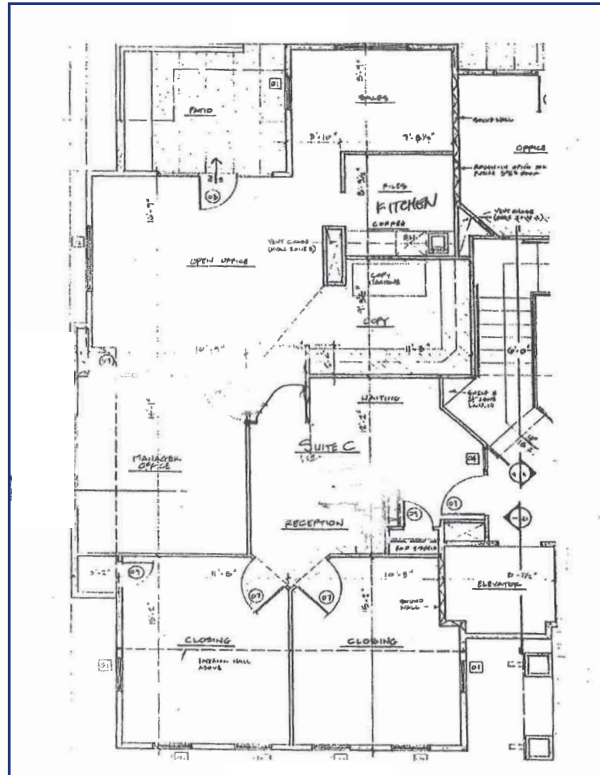
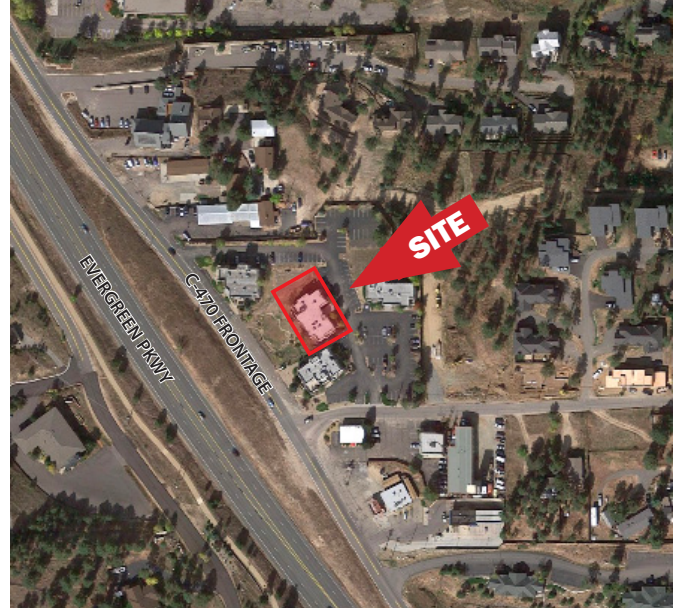
**RENÉE SPICER**

rspicer@gcgcre.com | 720.476.5226



**GENESEE  
COMMERCIAL  
GROUP, LLC**

**3082 EVERGREEN PARKWAY**  
Evergreen, Colorado 80439



**SUITE C - 1,553 RSF**

No warranty or representation is made as to the accuracy of the foregoing information. Terms of sale or lease and availability are subject to change or withdrawal without notice.

**FOR MORE INFORMATION CONTACT:**

**JAMIE MACBETH**

jmacbeth@gcgcre.com | 720.476.5229

**RENÉE SPICER**

rspicer@gcgcre.com | 720.476.5226