



**5601 S. BROADWAY**  
Littleton, Colorado 80121



## PROPERTY FEATURES

- New Aggressive Ownership
- Convenient access to C-470 and downtown Littleton
- Professionally Managed
- Plenty of Parking
- Functional layouts
- Creative Outside-the-Box Approach to Deals

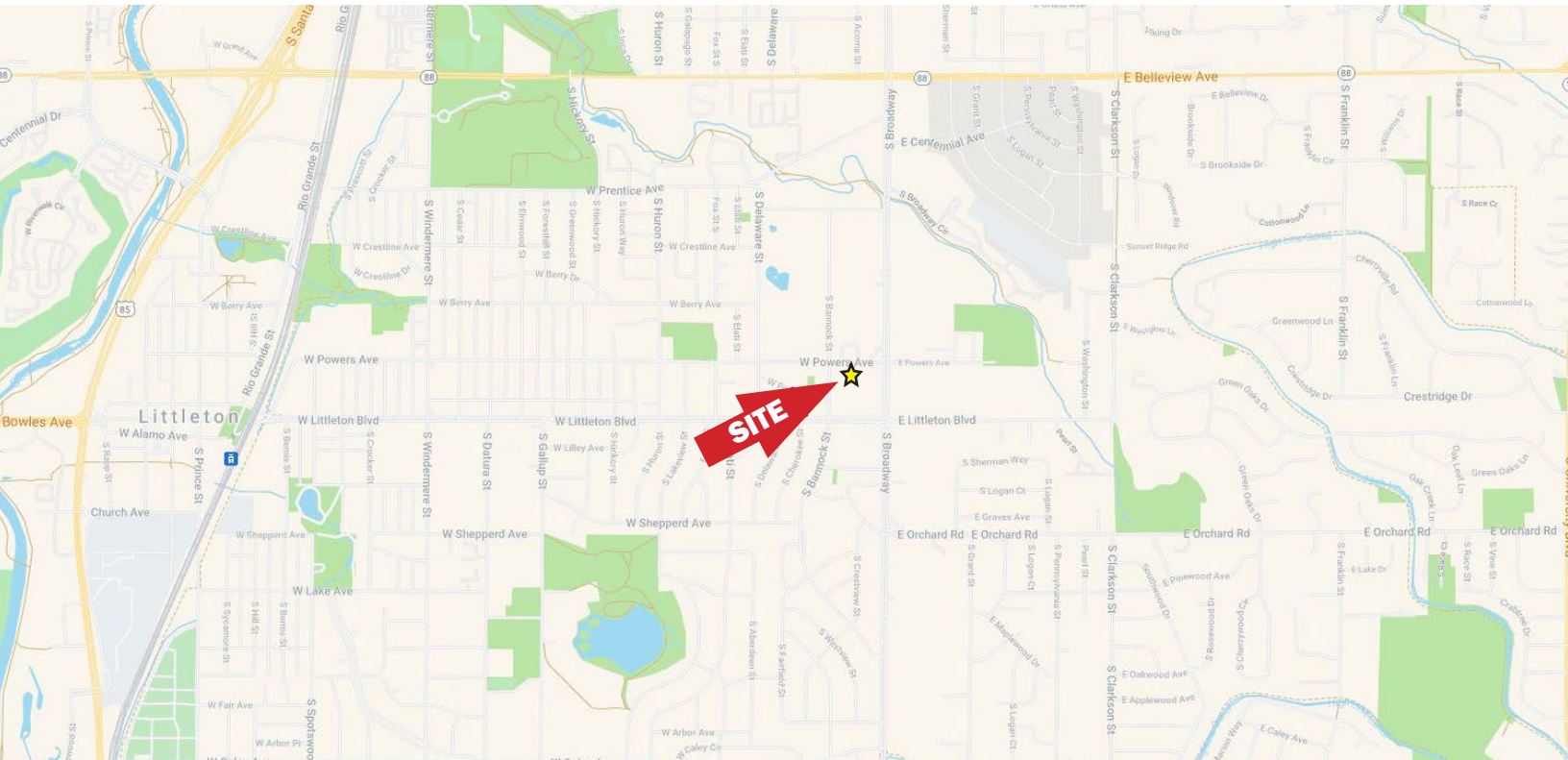
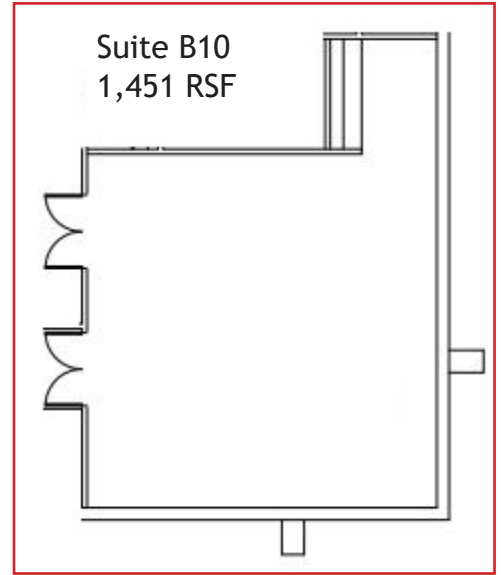
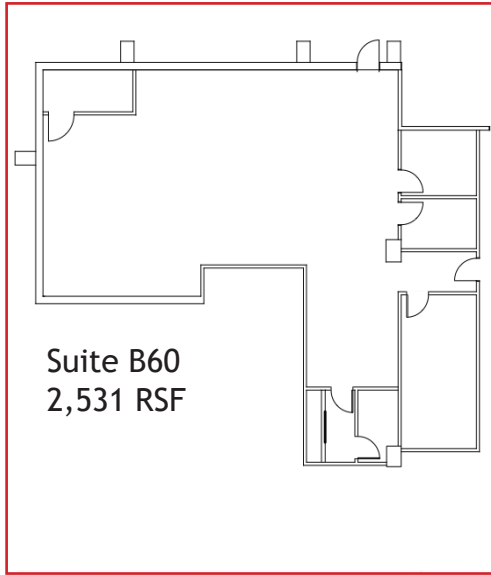
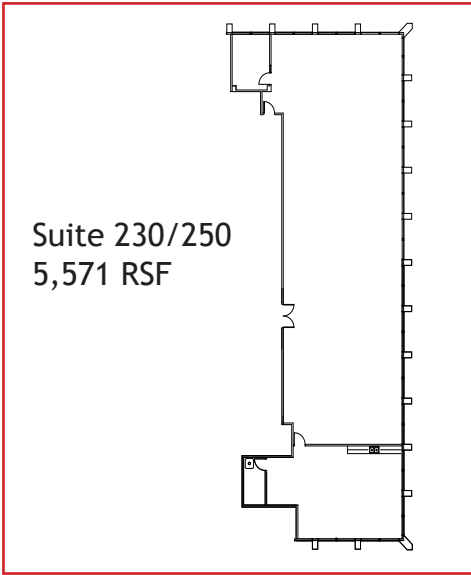
## PROPERTY SPECIFICATIONS

<b>Available:</b>	Suite 250	5,571 RSF
	Suite B60	2,531 RSF
	Suite B10	1,451 RSF
<b>Lease Rate:</b>		\$18.75-21.00/RSF Full Service Gross
<b>Building Size:</b>		64,400 RSF
<b>Elevator:</b>		Two
<b>Stories:</b>		Five
<b>Year Built:</b>		1973

**FOR MORE INFORMATION CONTACT:**

**T. BLAKE ROGERS**  
tblakerogers@gcgcre.com | 720.476.5227

**TIM ROGERS**  
tprogers@gcgcre.com | 720.476.5225



**FOR MORE INFORMATION CONTACT:**

**T. BLAKE ROGERS**

tblakerogers@gcgcre.com | 720.476.5227

**TIM ROGERS**

tprogers@gcgcre.com | 720.476.5225

GENESEE COMMERCIAL GROUP, LLC | 710 KIPLING STREET, SUITE 403 | LAKEWOOD, COLORADO 80215 | WWW.GCGCRE.COM