



5601 S. BROADWAY
Littleton, Colorado 80121



PROPERTY FEATURES

- New Aggressive Ownership
- Convenient Access to C-470 and Downtown Littleton
- Professionally Managed
- Plenty of Parking
- Functional Layouts
- Creative Outside-the-Box Approach to Deals
- Building Size: 64,400 RSF
- Elevator: Two
- Stories: Five
- Year Built: 1973

PROPERTY SPECIFICATIONS

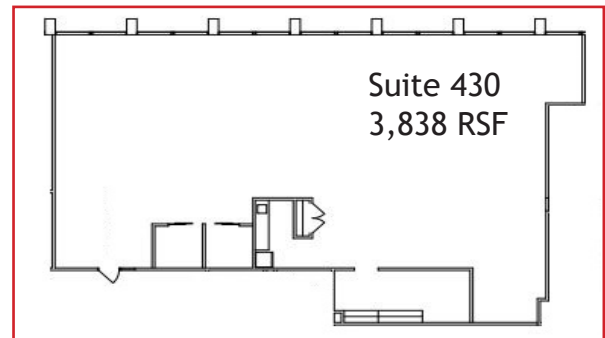
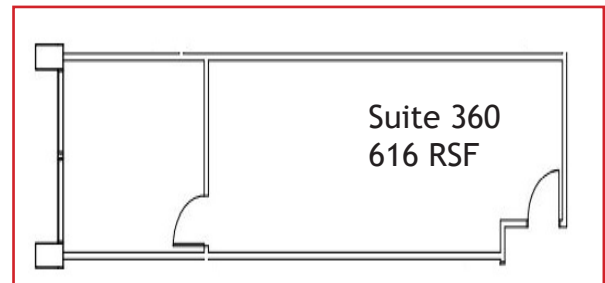
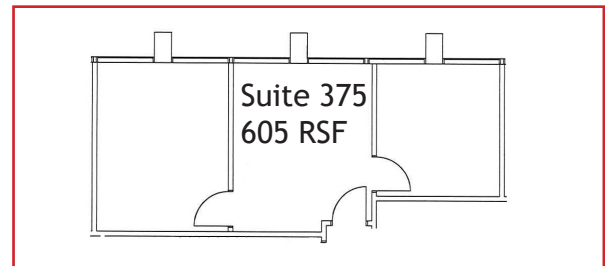
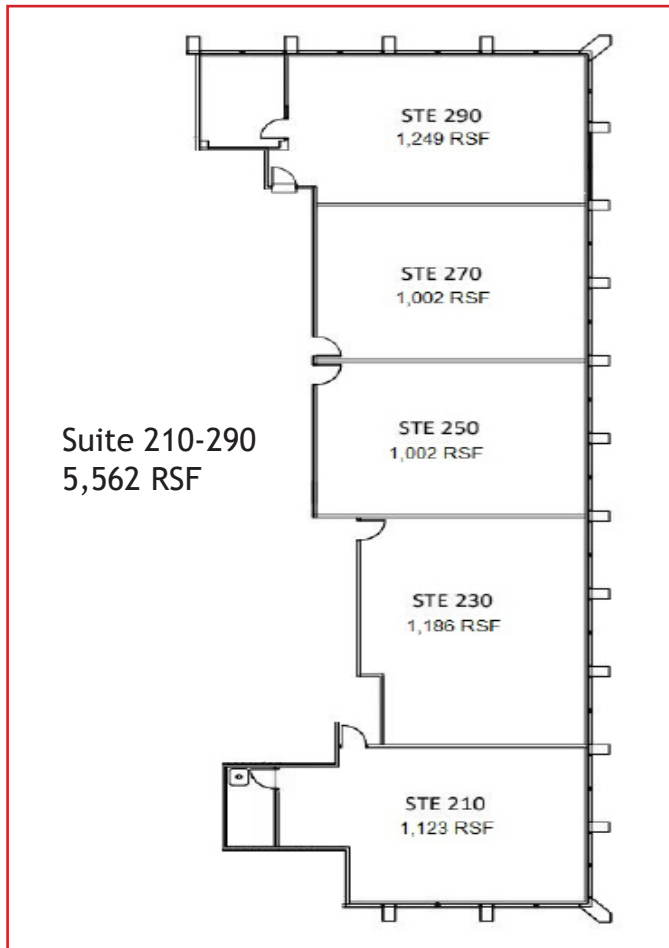
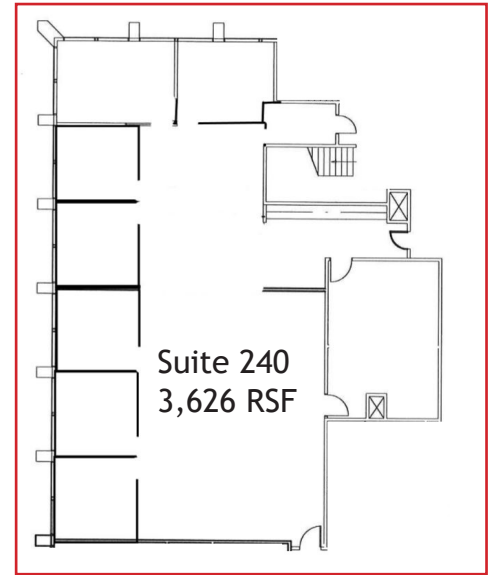
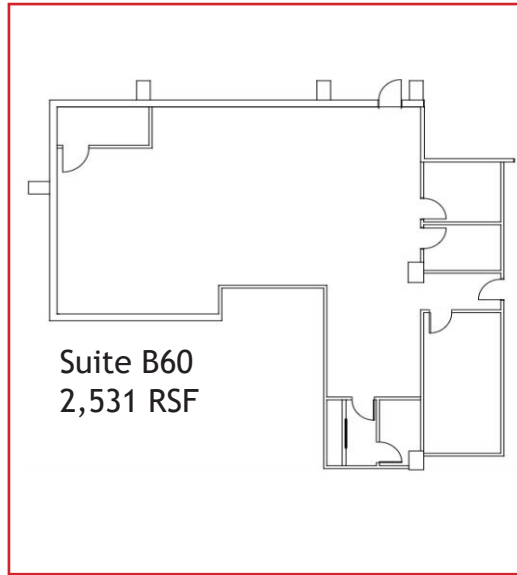
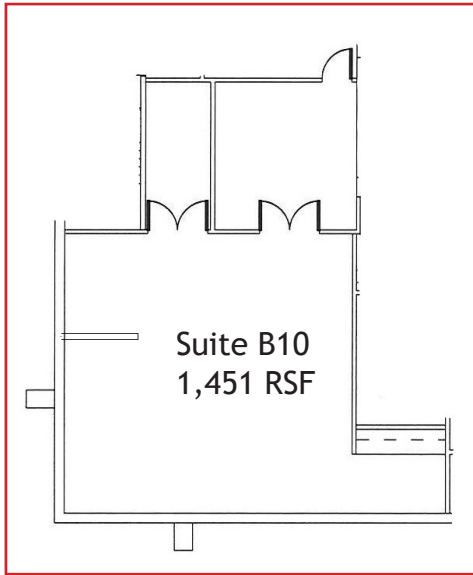
Available:	Suite 210	1,123 RSF
	Suite 230	1,186 RSF
	Suite 250	1,002 RSF
	Suite 270	1,002 RSF
	Suite 290	1,249 RSF
	Suite 210-290	5,562 RSF
	Suite 240	3,626 RSF
	Suite 360	616 RSF
	Suite 375	605 RSF
	Suite 430	3,838 RSF
	Suite B60	2,531 RSF
	Suite B10	1,451 RSF

Lease Rate: \$15.00/RSF Basement
\$23.00/RSF Floors 1-4
Full Service Gross

FOR MORE INFORMATION CONTACT:

T. BLAKE ROGERS
tblakerogers@gcgcre.com | 720.476.5227

TIM ROGERS
tprogers@gcgcre.com | 720.476.5225



FOR MORE INFORMATION CONTACT:

T. BLAKE ROGERS
tblakerogers@gcgcre.com | 720.476.5227

TIM ROGERS
tprogers@gcgcre.com | 720.476.5225