



**7220 W. JEFFERSON AVENUE**  
Lakewood, Colorado 80235



## PROPERTY SPECIFICATIONS

- Local ownership and management
- Updated building and common areas
- Abundant nearby amenities
- Connectivity through Comcast
- Card key building access
- Most suites have individual HVAC control

## PROPERTY FEATURES

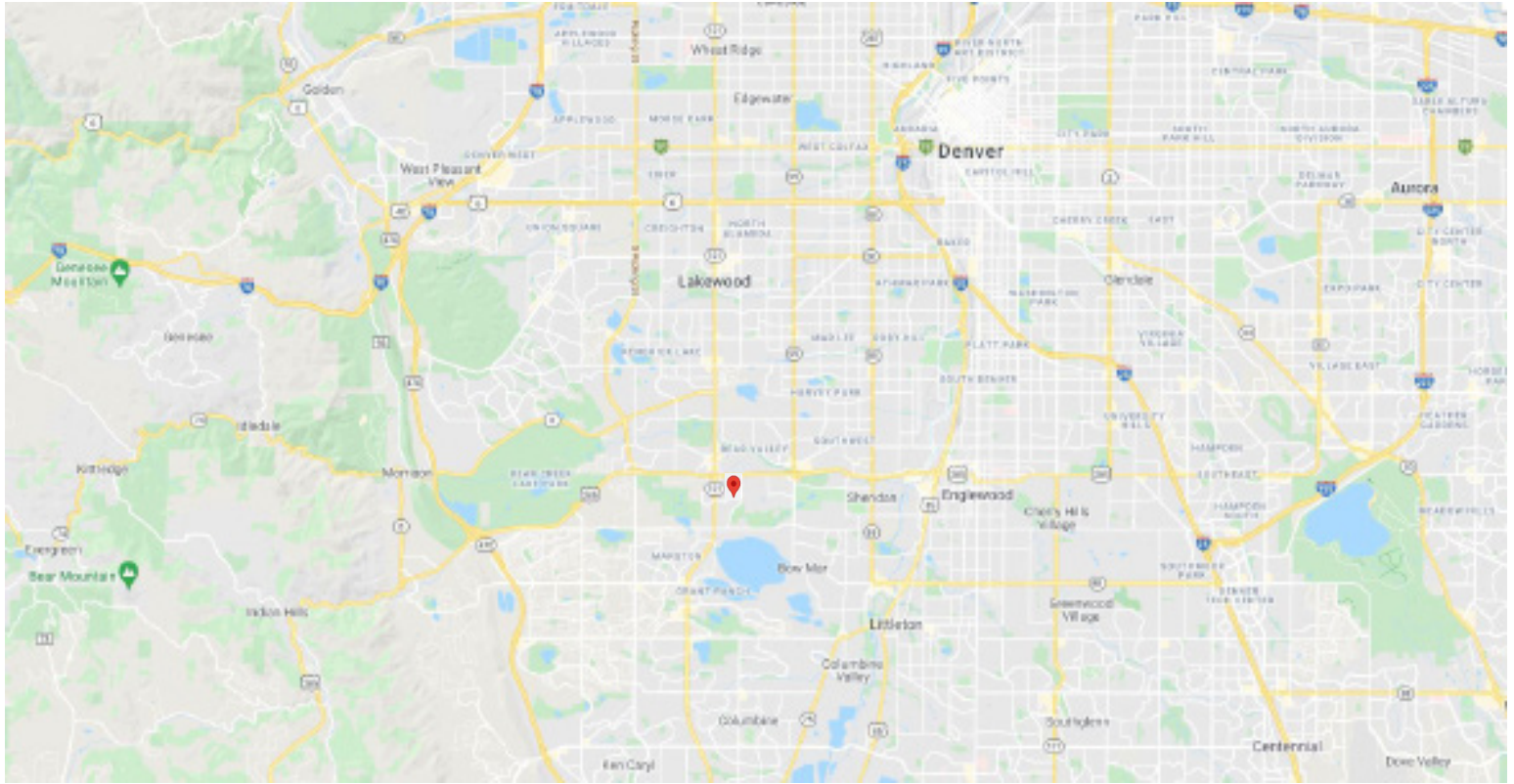
**Available:**      **Suite 112**      Available Now      **842 RSF**

<b>Lease Rate:</b>	<b>\$16.50/RSF FSG</b>
<b>Parking Ratio:</b>	<b>4/1,000 SF</b>
<b>Stories:</b>	<b>Four</b>
<b>Elevators:</b>	<b>One</b>
<b>Year Constructed:</b>	<b>1981</b>

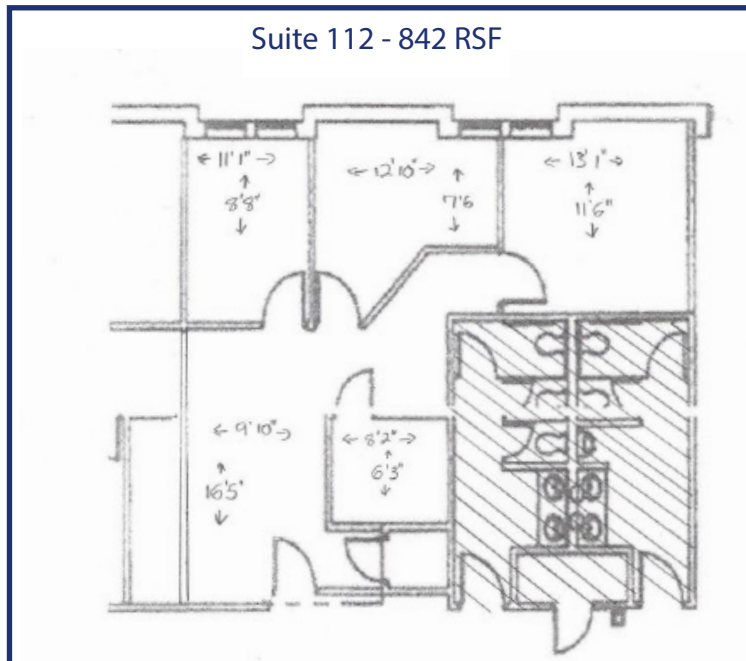
**FOR MORE INFORMATION CONTACT:**

**RENÉE SPICER**  
rspicer@gcgcre.com | 720.476.5226

**WILLIAM NETWAL**  
wnetwal@gcgcre.com | 720.476.5228



Suite 112 - 842 RSF



**FOR MORE INFORMATION CONTACT:**

**RENÉE SPICER**  
rspicer@gcgcre.com | 720.476.5226

**WILLIAM NETWAL**  
wnetwal@gcgcre.com | 720.476.5228