



## 1923 Wadsworth Blvd Lakewood, CO 80214



### PROPERTY FEATURES

- Excellent visibility on Wadsworth Blvd
- Tall Ceilings
- Large windows facing Wadsworth
- 45,544 VPD
- Average HH income 5 miles \$95,958
- Large parking lot on two sides
- Some fenced in storage in back

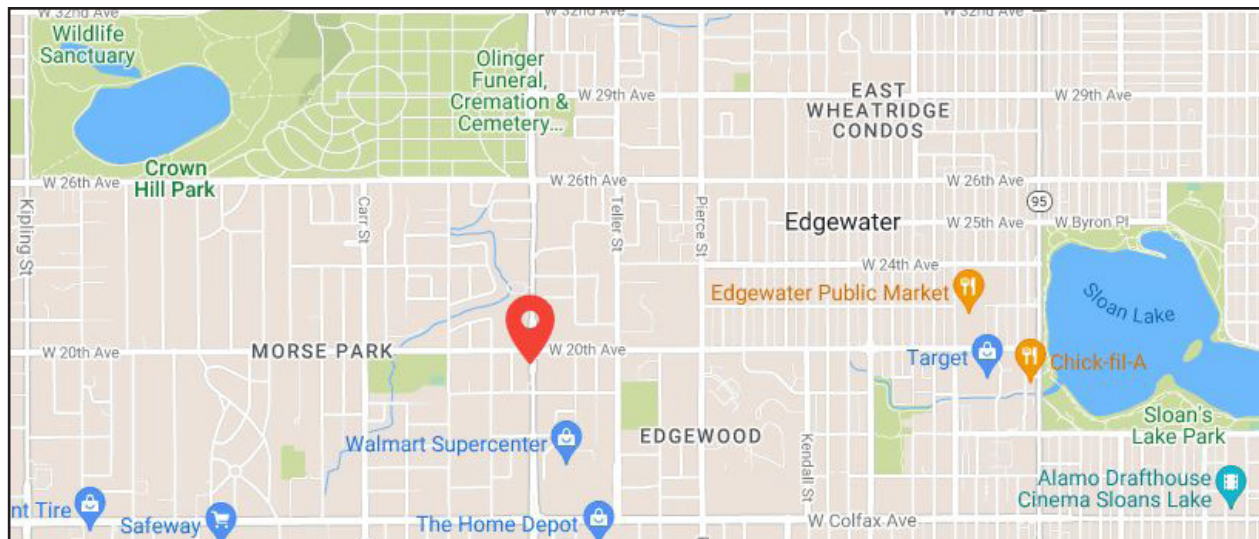
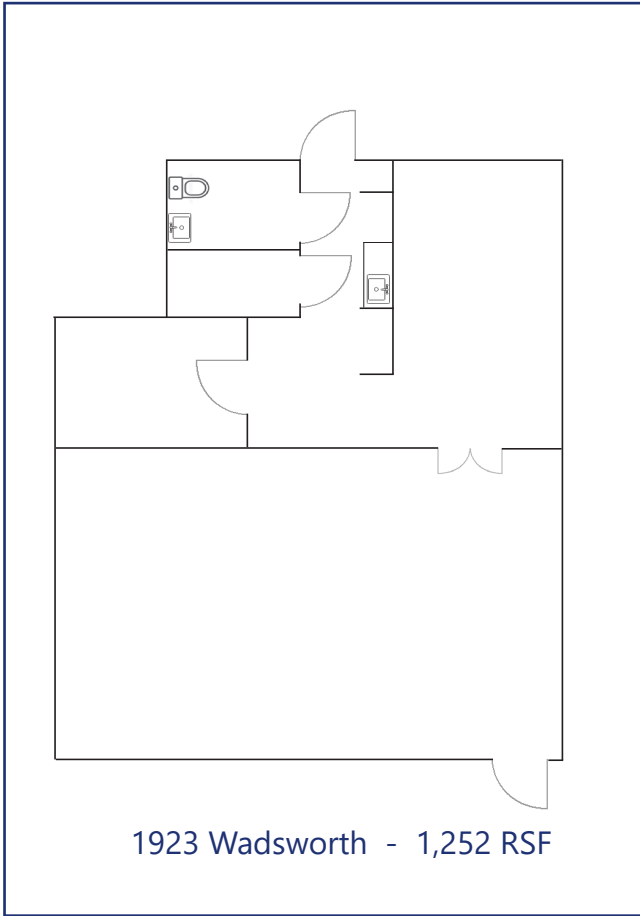
### PROPERTY SPECIFICATIONS

Available:	1,252 RSF
Lease Rate:	\$18.00 NNN
Date Available:	5/1/2023
Year Built:	1962
Stories:	One

### FOR MORE INFORMATION CONTACT:

**RENÉE SPICER**

[rspicer@gcgcre.com](mailto:rspicer@gcgcre.com) | 720.476.5226



**FOR MORE INFORMATION CONTACT:**

**RENÉE SPICER**

[rspicer@gcgcre.com](mailto:rspicer@gcgcre.com) | 720.476.5226