



30940 STAGECOACH BLVD.
Evergreen, Colorado 80439



PROPERTY FEATURES

- Great North Evergreen location just off Evergreen Parkway
- Well maintained medical office complex
- Available immediately
- Join eight medical practices at Evergreen Medical Center

PROPERTY SPECIFICATIONS

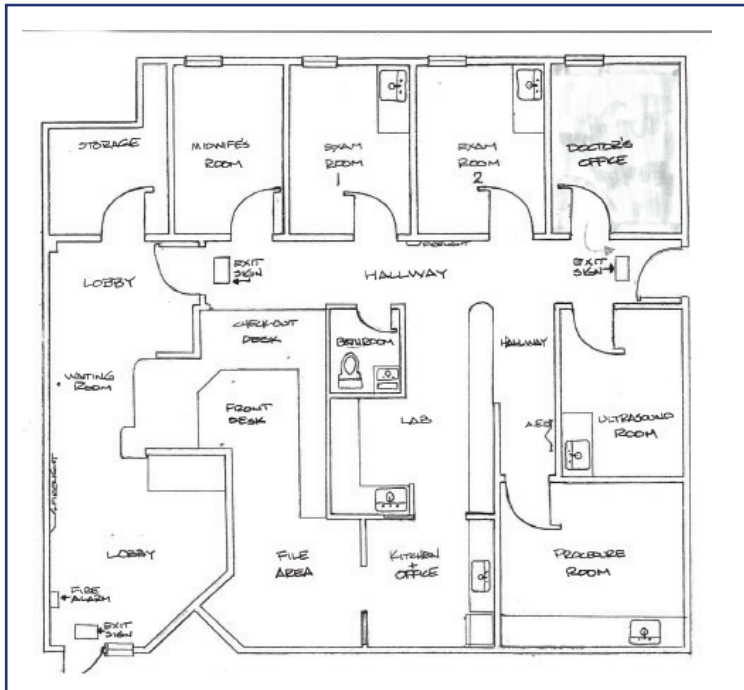
Available:	Suite E-230 2,150 RSF
Furnished Medical Suite	Suite E-290 2,743 RSF
Lease Rate:	\$24.00/SF FSG
Combined Building Size:	34,937 SF
Stories:	Two
Parking:	Abundant

FOR MORE INFORMATION CONTACT:

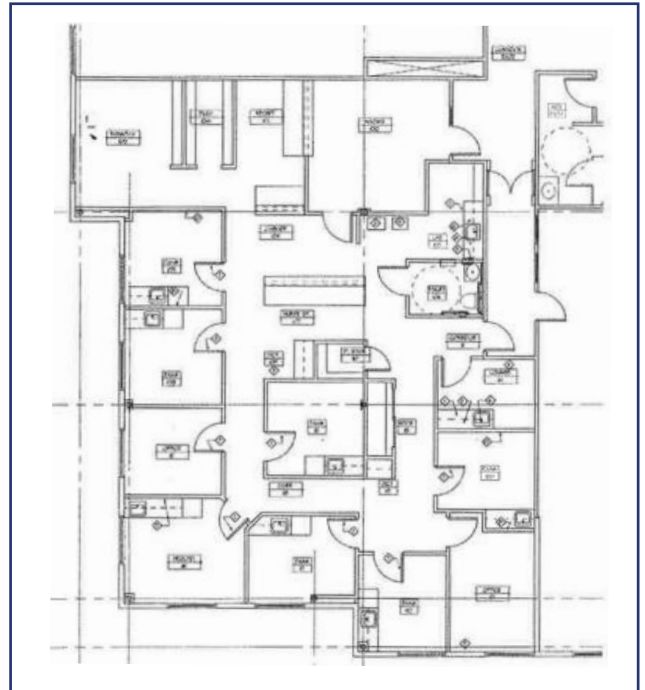
JAMIE MACBETH **RENÉE SPICER**
jmacbeth@gcgcre.com | 720.476.5229 rspicer@gcgcre.com | 720.476.5226



Suite E-230 of 2,150 RSF



Suite E-290 of 2,743 RSF



FOR MORE INFORMATION CONTACT:

JAMIE MACBETH

jmacbeth@gcgcre.com | 720.476.5229

RENÉE SPICER

rspicer@gcgcre.com | 720.476.5226