



**GENESEE**  
COMMERCIAL  
GROUP, LLC

# OFFICE SPACE FOR LEASE

2750 S Wadsworth Blvd &  
7550 W Yale Ave



## AVAILABILITY

### SUITE #

### SIZE

### DESCRIPTION

A-140

1,615 RSF

5 Private Offices, Kitchen, Storage

A-220

1,690 RSF

4 Private Offices, Kitchen

A-200-3

N/A

Single Private Office

C-208

1,450 RSF

4 Private Offices, Kitchen, Corner of the Building

D-100

2,035 RSF

5 Private Offices, Large Conference Room, Kitchen, Storage

### FOR MORE INFORMATION CONTACT:

**WILLIAM NETWAL**

wnetwal@gcgcre.com | 720.476.5228

**JAMIE MACBETH**

jmacbeth@gcgcre.com | 720.476.5229



# PROPERTY FEATURES

2750 S Wadsworth & 7550 W Yale Ave



Lease Rate: \$16/SF FSG



Quiet and peaceful



Well maintained office development with professional landscaping



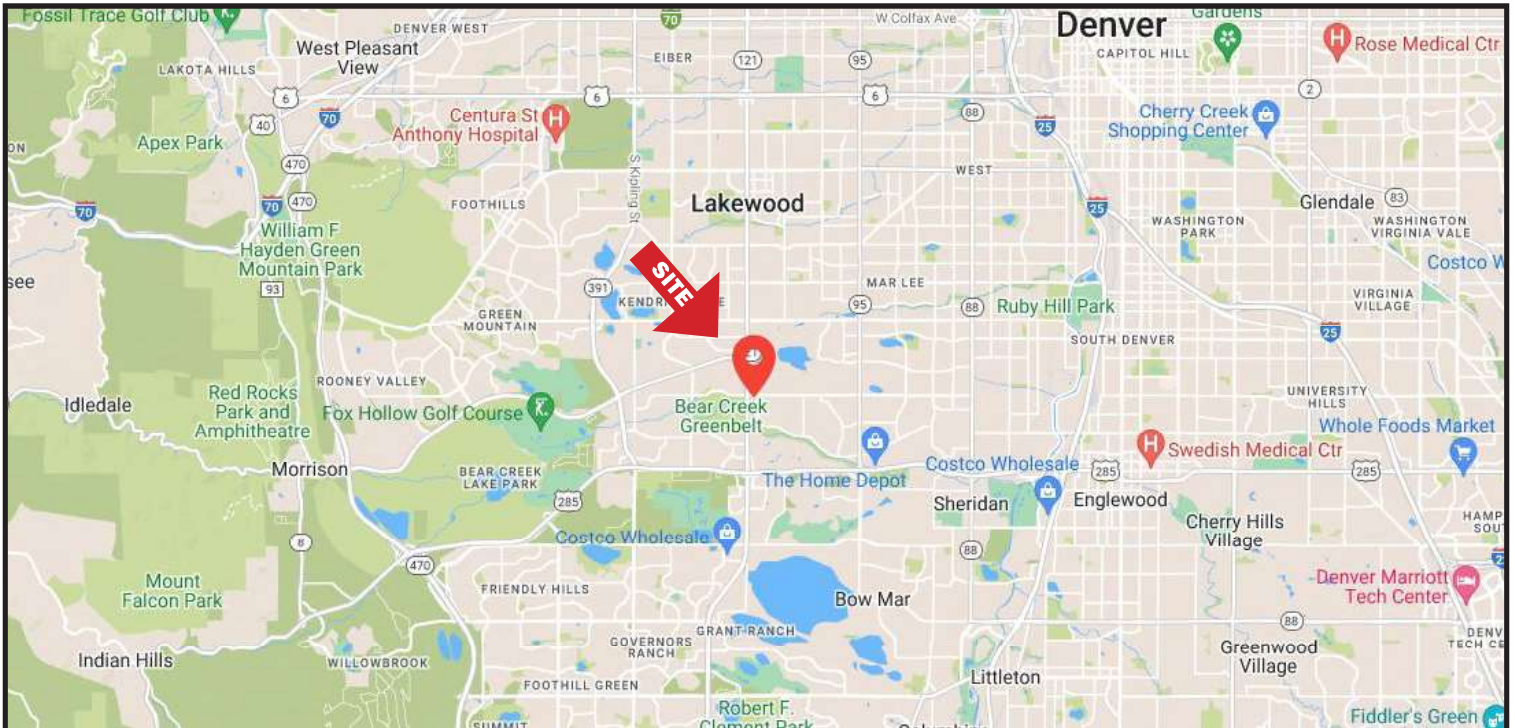
Secure space with key code access



Ample parking and easy access to major roads



Ultrafast gig fiber wifi with in-house tech support from \$130/month



**FOR MORE INFORMATION CONTACT:**

**WILLIAM NETWAL**

wnetwal@gcgcre.com | 720.476.5228

**JAMIE MACBETH**

jmacbeth@gcgcre.com | 720.476.5229

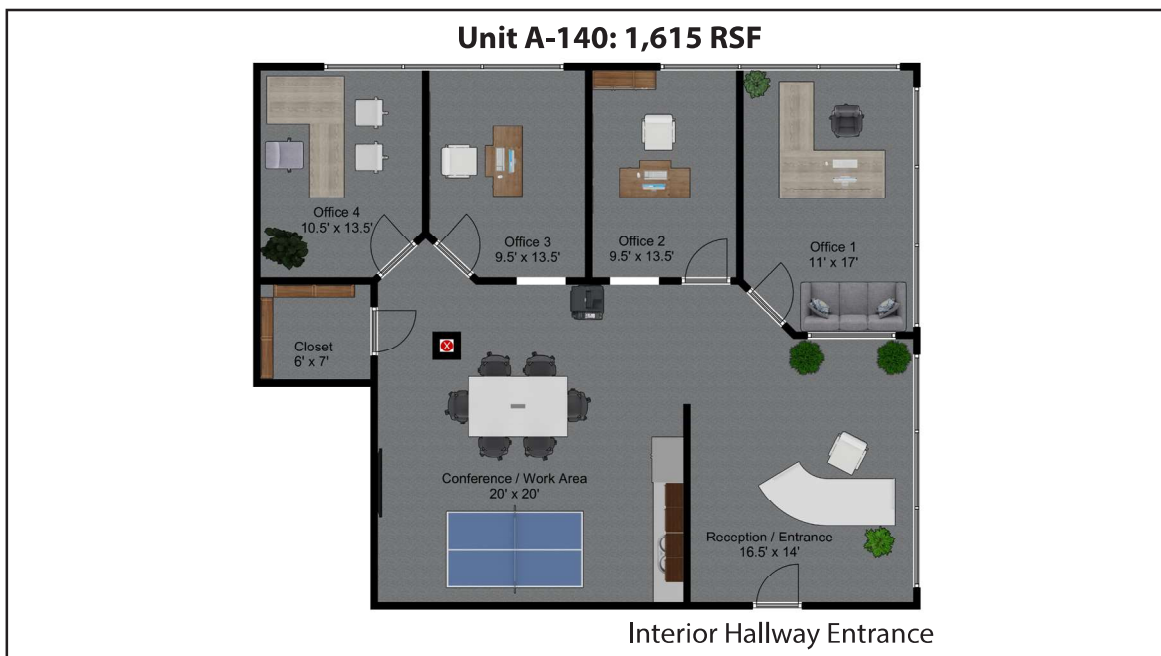
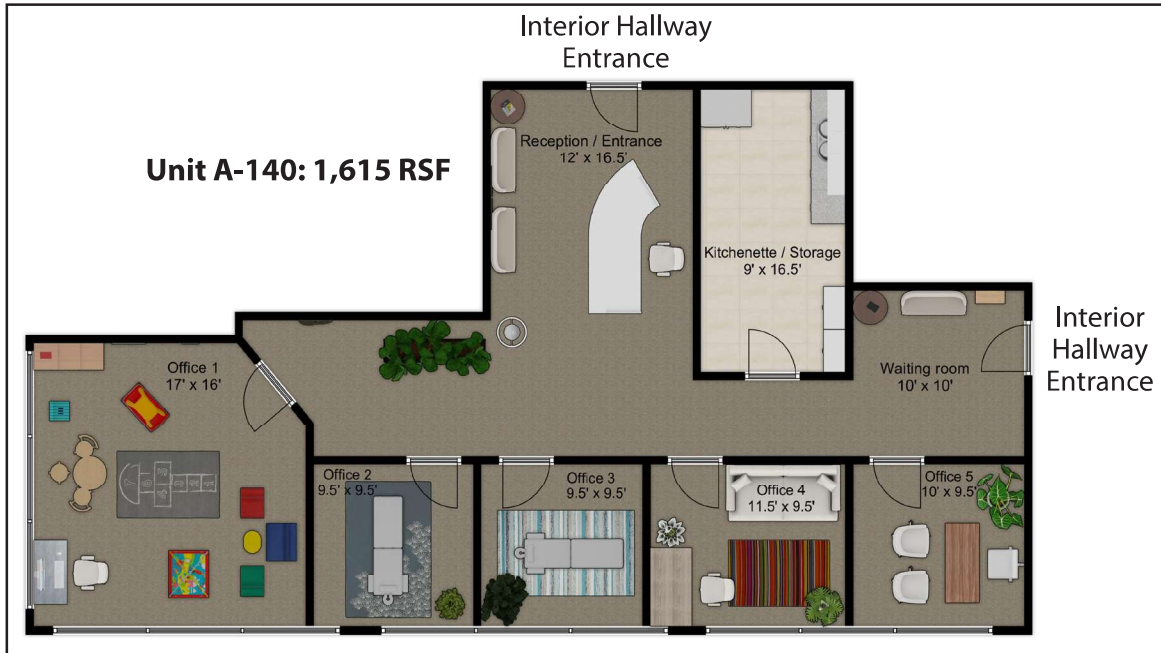
GENESEE COMMERCIAL GROUP, LLC | 710 KILPING STREET, SUITE 403 | LAKEWOOD, COLORADO 80215 | WWW.GCGCRE.

No warranty or representation is made as to the accuracy of the foregoing information. Terms of sale or lease and availability are subject to change or withdrawal without notice.





# 2750 S Wadsworth Blvd & 7550 W Yale Ave Denver, Colorado 80227



## FOR MORE INFORMATION CONTACT:

**WILLIAM NETWAL**

wnetwal@gcgcre.com | 720.476.5228

**JAMIE MACBETH**

jmacbeth@gcgcre.com | 720.476.5229

GENESEE COMMERCIAL GROUP, LLC | 710 Kipling Street, Suite 403 | Lakewood, Colorado 80215 | [www.gcgcre.com](http://www.gcgcre.com)

No warranty or representation is made as to the accuracy of the foregoing information. Terms of sale or lease and availability are subject to change or withdrawal without notice.

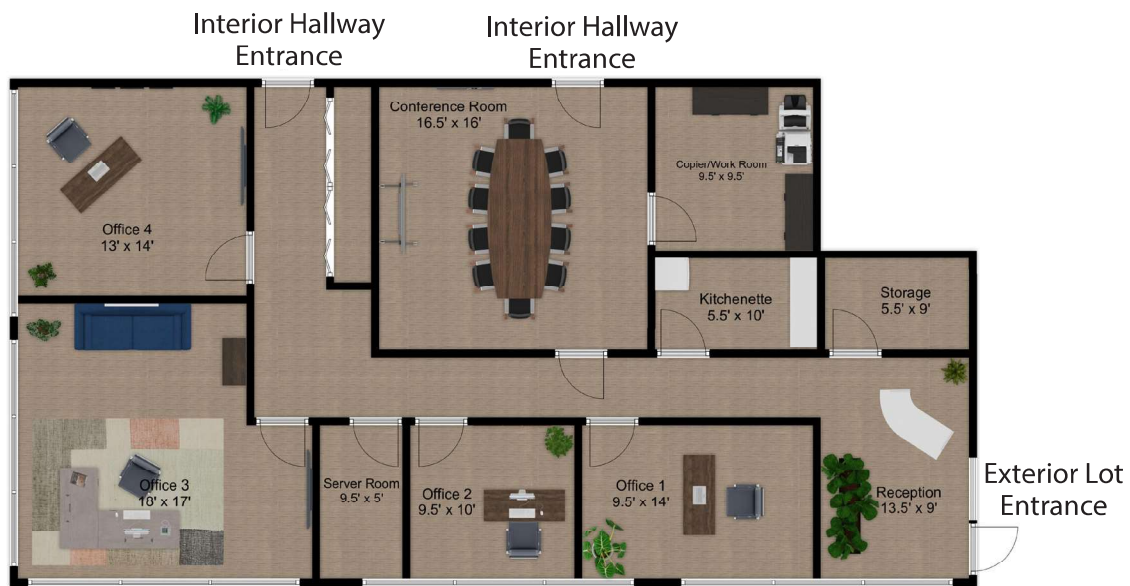


# 2750 S Wadsworth Blvd & 7550 W Yale Ave Denver, Colorado 80227

## Unit C-208: 1,450 RSF



## Unit D-100: 2,035 RSF



### FOR MORE INFORMATION CONTACT:

**WILLIAM NETWAL**

wnetwal@gcgcre.com | 720.476.5228

**JAMIE MACBETH**

jmacbeth@gcgcre.com | 720.476.5229

GENESEE COMMERCIAL GROUP, LLC | 710 KIPLING STREET, SUITE 403 | LAKEWOOD, COLORADO 80215 | WWW.GCGCRE.

No warranty or representation is made as to the accuracy of the foregoing information. Terms of sale or lease and availability are subject to change or withdrawal without notice.