

BEAR VALLEY WEST

2750 S. WADSWORTH BLVD.

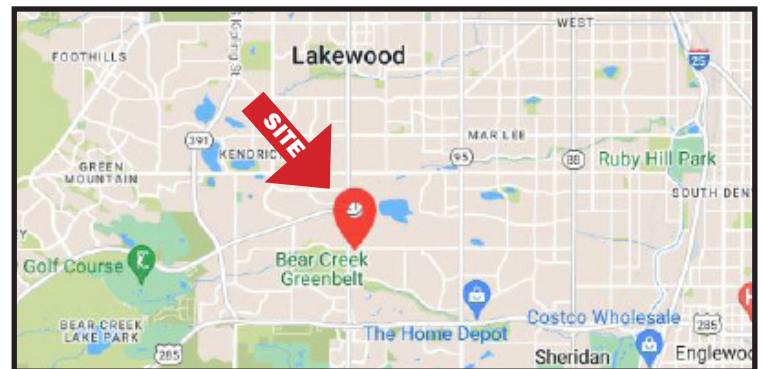


PROPERTY FEATURES

- Lease Rate: \$16.00/SF FSG
- Quiet and peaceful
- Well maintained office complex with professional landscaping
- Secure space with key code access
- Ample parking and easy access to major roads
- Ultrafast gig fiber wifi with in-house tech support from \$130/month

AVAILABILITY - 2750 S. WADSWORTH BLVD.

| SUITE | SIZE | AVAILABLE DATE |
|-------|-----------|----------------|
| D-203 | 1,184 RSF | NOW |
| D-200 | 4,145 RSF | NOW |



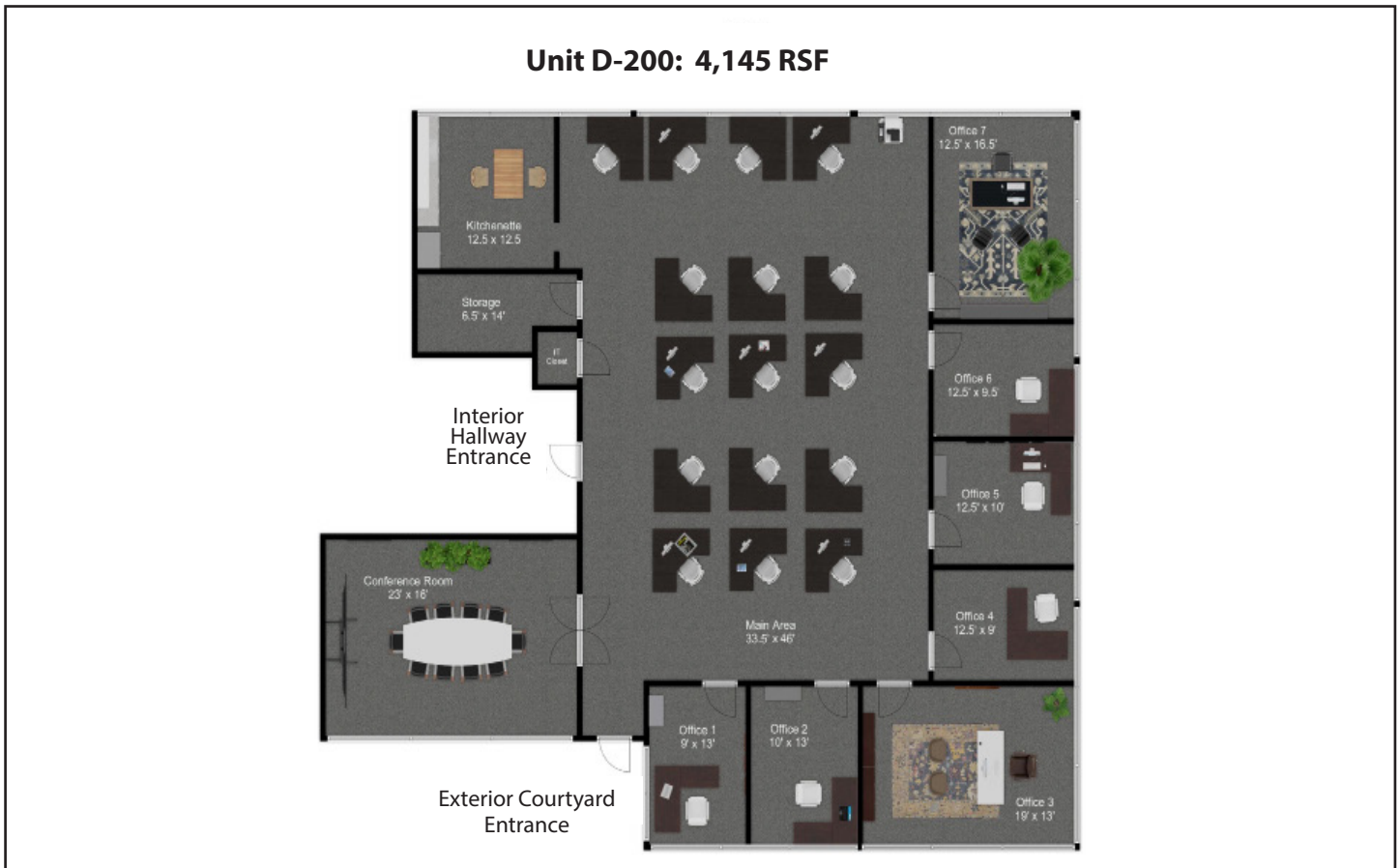
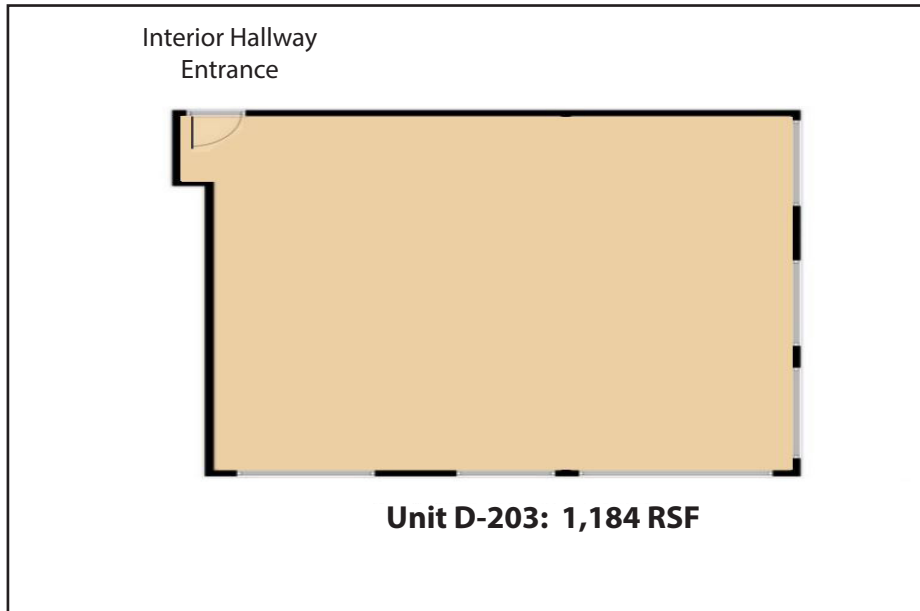
FOR MORE INFORMATION CONTACT:

WILLIAM NETWAL

wnetwal@gcgcre.com | 720.476.5228

JAMIE MACBETH

jmacbeth@gcgcre.com | 720.476.5229



FOR MORE INFORMATION CONTACT:

WILLIAM NETWAL

wnetwal@gcgcre.com | 720.476.5228

JAMIE MACBETH

jmacbeth@gcgcre.com | 720.476.5229