



**GENESEE**  
COMMERCIAL  
GROUP, LLC

For Lease | Office

12211 W. Alameda

Lakewood 80228



T. Blake Rogers - 720.530.5788  
tblakerogers@gcgcre.com

Jamie Macbeth - 720.476.5229  
jmacbeth@gcgcre.com

Tim P. Rogers - 303.641.4080  
trogers@gcgcre.com

## Leasing Specifications

Lease Rate: \$18.50 FSG

Available SF: 902 - 1,268 rsf

Lease Term: 3-10 Years

Building Area: 19,223 sf

Parking: 5/1000

Elevator: No

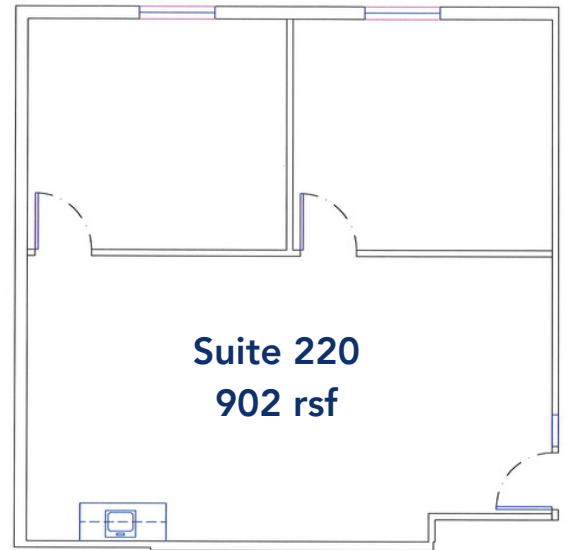
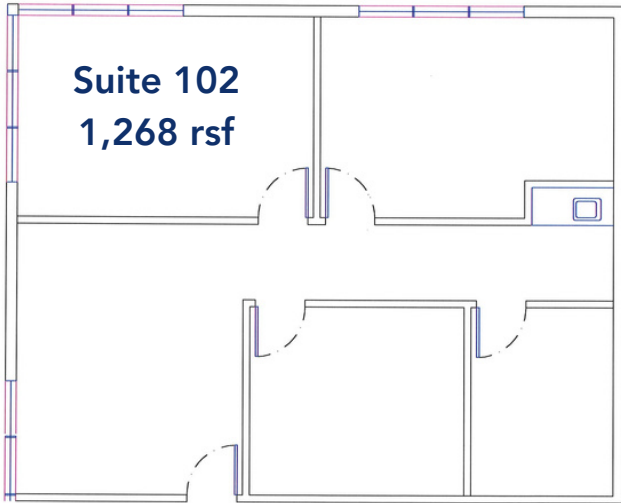
Year Renovated: 2011

Building Signage: Available



# FLOOR PLAN

Available  
8/1/24



## Property Summation



Local Onsite Ownership



Close Proximity to St. Anthony's and Denver Federal Center



Common Conference Room



Short commute to Bus and Light Rail



2021 Energy Star Certified Building



Abundant Food and Retail Options Nearby



T. Blake Rogers - 720.530.5788

[tblakerogers@gcgcre.com](mailto:tblakerogers@gcgcre.com)

Jamie Macbeth - 720.476.5229

[jmacbeth@gcgcre.com](mailto:jmacbeth@gcgcre.com)

Tim P. Rogers - 303.641.4080

[trogers@gcgcre.com](mailto:trogers@gcgcre.com)



**GENESEEE**  
COMMERCIAL  
GROUP, LLC

Genesee Commercial Group | 710 Kipling Street Suite 403 | Lakewood, CO 80215