



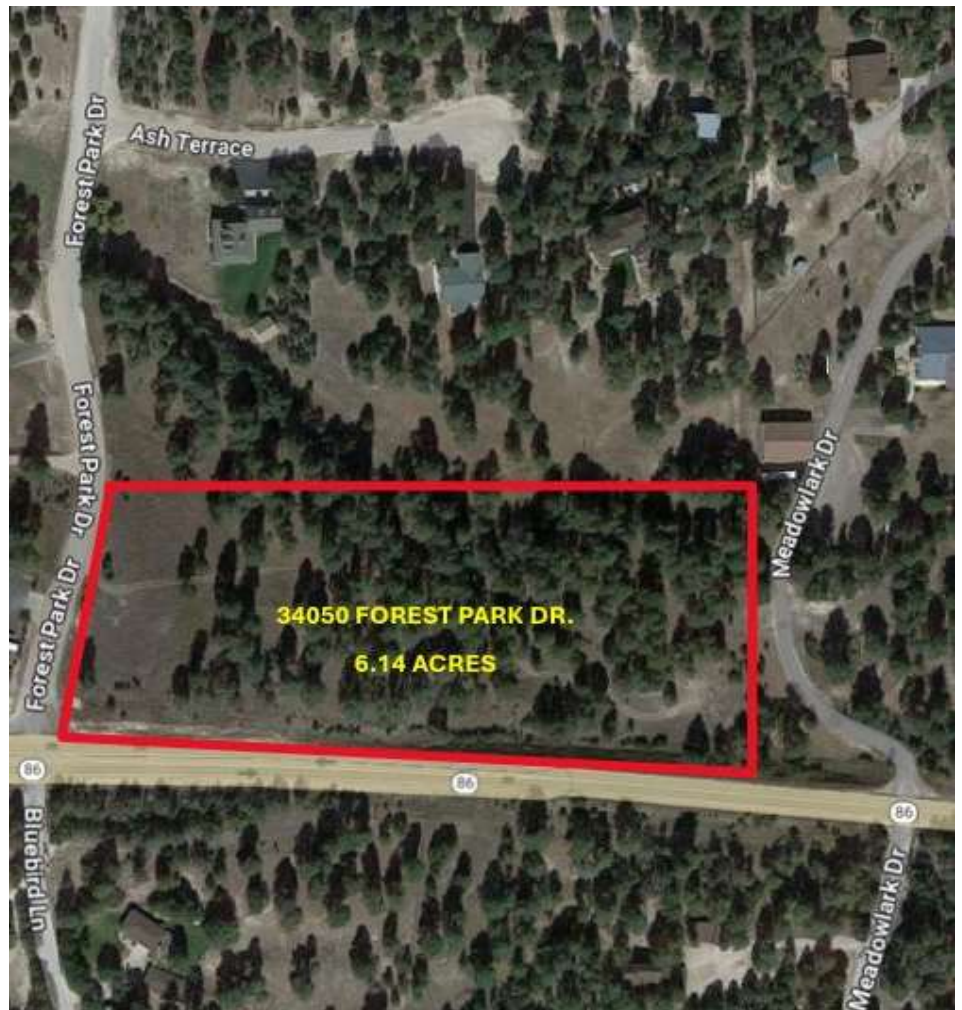
**GENESEE  
COMMERCIAL  
GROUP, LLC**

**FOR SALE**

**LAND**

**34050 FOREST PARK DRIVE  
ELIZABETH, COLORADO 80107**

**\$1,982,000**



## PROPERTY FEATURES

- 6.14 acres
- Highly visible with great access to Highway 86
- Located in the heart of Elizabeth on the corner of Highway 86 and Forest Park Drive one mile east of historic Main Street
- Zoning: PUD

**FOR MORE INFORMATION CONTACT:**

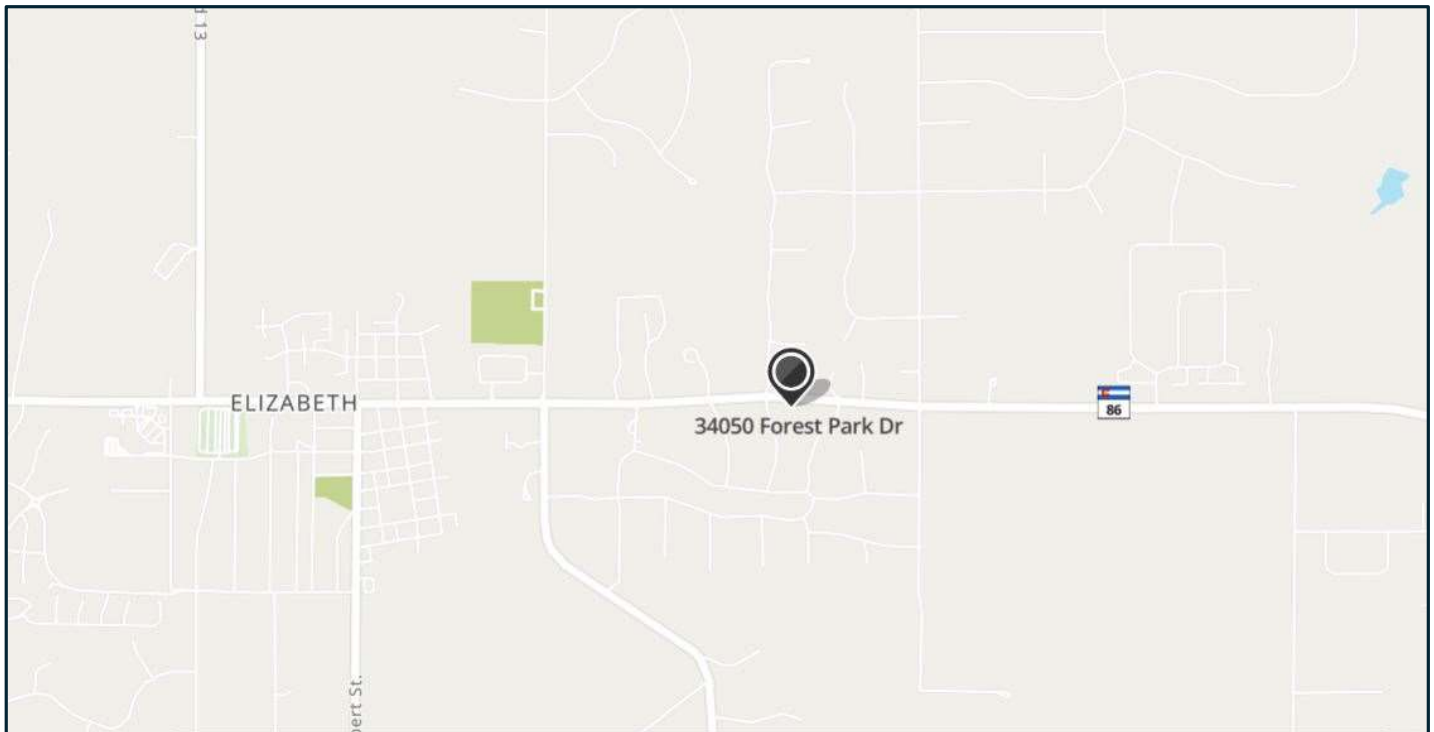
**WILLIAM NETWAL**

720.476.5228 | [wnetwal@gcgcre.com](mailto:wnetwal@gcgcre.com)



**GENESEE**  
COMMERCIAL  
GROUP, LLC

**34050 FOREST PARK DRIVE**  
ELIZABETH, COLORADO 80107



No warranty or representation is made as to the accuracy of the foregoing information. Terms of sale or lease and availability are subject to change or withdrawal without notice.

**FOR MORE INFORMATION CONTACT:**

**WILLIAM NETWAL**

720.476.5228 | [wnetwal@gcgcre.com](mailto:wnetwal@gcgcre.com)