



**3072 EVERGREEN PARKWAY**  
Evergreen, Colorado 80439



**PROPERTY FEATURES**

- Great North Evergreen location
- Easy access to I-70
- Excellent visibility from Evergreen Parkway
- First floor suite with lobby access
- On-site property management
- Beautifully landscaped

**BUILDING SPECIFICATIONS**

<b>Available:</b>	Suite 100 - 1,340 RSF
<b>Lease Rates:</b>	\$21.00/RSF MG <i>Tenant pays for Janitorial Services</i>
<b>Building Size:</b>	5,891 SF
<b>Year Built:</b>	1997
<b>Stories:</b>	2

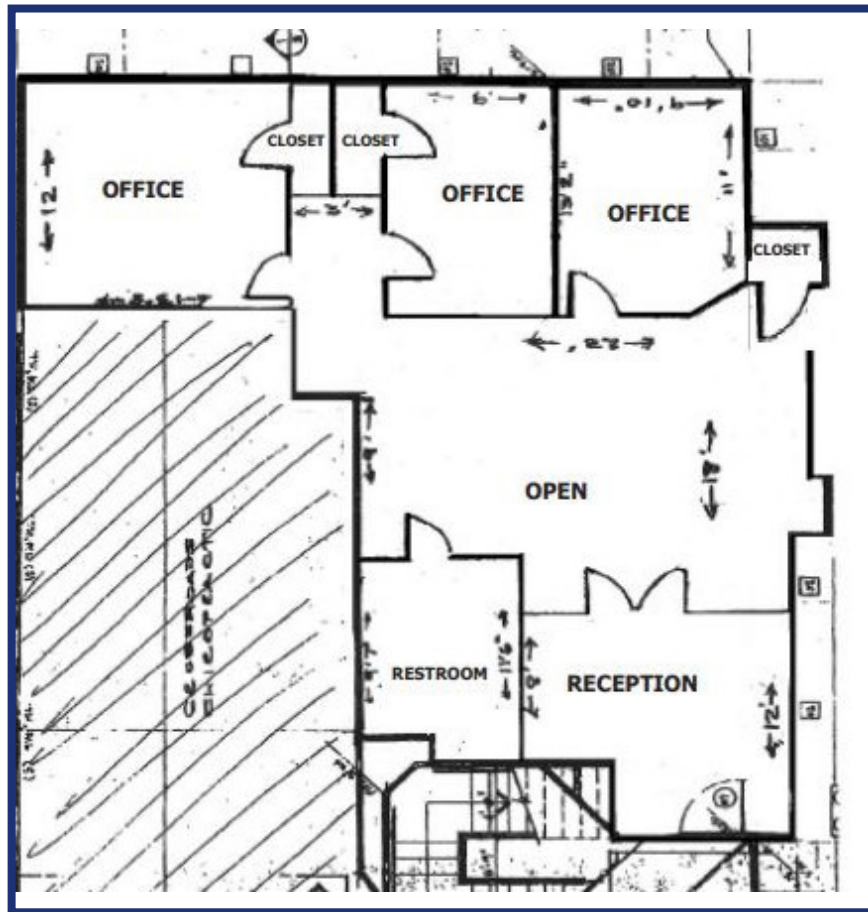
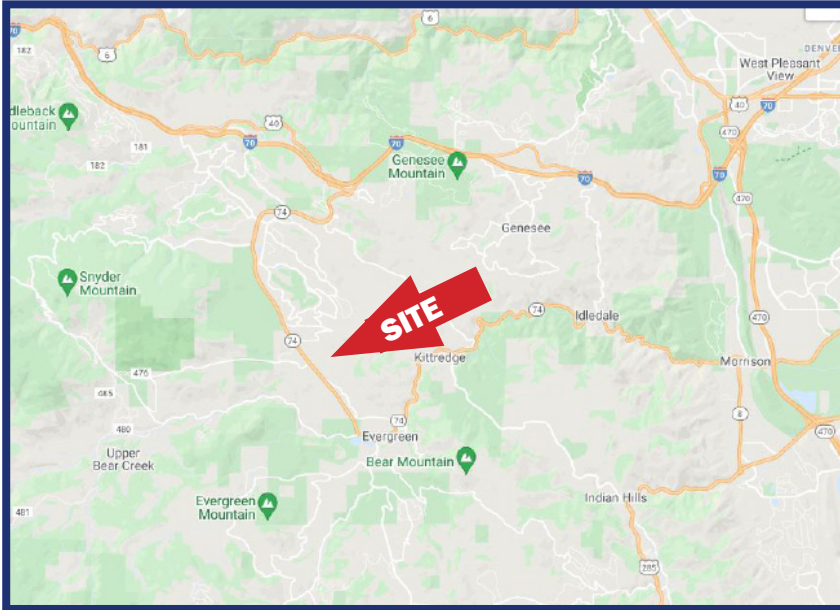
**FOR MORE INFORMATION CONTACT:**

**JAMIE MACBETH**

jmacbeth@gcgcre.com | 720.476.5229

**RENÉE SPICER**

rspicer@gcgcre.com | 720.476.5226



No warranty or representation is made as to the accuracy of the foregoing information. Terms of sale or lease and availability are subject to change or withdrawal without notice.

**FOR MORE INFORMATION CONTACT:**

**JAMIE MACBETH**

[jmacbeth@gcgcre.com](mailto:jmacbeth@gcgcre.com) | 720.476.5229

**RENÉE SPICER**

[rspicer@gcgcre.com](mailto:rspicer@gcgcre.com) | 720.476.5226